

Fonsie Mealy's <sup>Est 1934</sup>

# SPRING FINE ART SALE

Wednesday  
& Thursday  
March 5th & 6th





# Fonsie Mealy's Est. 1934



Lot 242

Front Cover: Lot 3  
Inside Front Cover: Lot 424  
Inside Back Cover: Lot 183  
Back Cover: Lot 576

Live Bidding & Online Bids available  
(surcharges apply):

via [fonsiemealy.ie](https://fonsiemealy.ie)

[easyliveauction.com](https://easyliveauction.com)



[the-saleroom.com](https://the-saleroom.com)



## SPRING FINE ART SALE

### Wednesday & Thursday March 5th & 6th, 2025

Commencing at 12pm sharp each day:

**At: The Avalon House Hotel,  
The Square, Castlecomer,  
Co. Kilkenny, R95 NA06**

**To include:**

Quality Furniture, Paintings & Prints,  
Ceramics & Other Collectibles, etc.

**Day 1 - Lot 1 - 399**

**Day 2 - Lots 400 - 712**

**Viewing:**

**Kilkenny Road Showrooms,  
Castlecomer, Co. Kilkenny, R95 TN0F**

Friday, February 28th: 9.30am – 5pm

Monday, March 3rd: 9.30am – 5pm

Tuesday, March 4th: 9.30am – 5pm

**Bidding & Queries:**

Tel: +353 56 4441229 | +353 56 4446200

[info@fonsiemealy.ie](mailto:info@fonsiemealy.ie)

Sale Reference: C050325

Follow us:



@FonsieMealy



@fonsiemealyauctioneers

Fonsie Mealy's Est. 1934

Chatsworth Auction Rooms, Chatsworth St., Castlecomer, Co. Kilkenny, Ireland  
Tel: +353 56 4441229 | Email: [info@fonsiemealy.ie](mailto:info@fonsiemealy.ie) | Website: [www.fonsiemealy.ie](https://www.fonsiemealy.ie)

PSRA Registration No: 001687

# Fonsie Mealy's <sup>Est.</sup> 1934

PSRA Registration No: 001687

## **Mr Fonsie Mealy F.R.I.C.S.**

(Director)

Fonsie Mealy Auctioneers

Fine Art & Rare Books

T: 056 44 41229

E: [info@fonsiemealy.ie](mailto:info@fonsiemealy.ie)



## **Mr George Fonsie Mealy B.A.**

(Director)

Fonsie Mealy Auctioneers

Fine Art & Rare Books

T: 056 44 41413

E: [georgef@fonsiemealy.ie](mailto:georgef@fonsiemealy.ie)



---

## **Staff at Fonsie Mealy Auctioneers**

Mrs Brigid Coady (Reception)

Mr Kevin Mullins (Accounts) | [accounts@fonsiemealy.ie](mailto:accounts@fonsiemealy.ie)

Mrs Elizabeth McDonald (Administration)

Mrs Olha Horb

Mr Jim McDonald

Mr Tony Osborne

Mr. Edward Phelan

Mr Yurii Horb

All enquiries for this auction: [info@fonsiemealy.ie](mailto:info@fonsiemealy.ie)

# VIEWING & BIDDING

## Online at Fonsie Mealy's

Fonsie Mealy's are pleased to present **Fonsie Mealy's Live**

Our website allows for convenient Viewing and Bidding of our forthcoming sales. We offer numerous viewings options – pdf version catalogue – flipbook catalogue – and our website. If you require any further information about any lot, our staff will be more than happy to assist you with your query, either by telephone – **056 44 41229** or email **info@fonsiemealy.ie**

**Fonsie Mealy's Live** offers bidding directly through our own platform **Fonsie Mealy's**. This is fully operational for any client that wishes to submit bids and follow the sale live. Bidding through this portal will attract **an additional surcharge** (4% on the hammer price) for lots purchased.

Clients have the option of bidding live through the **Easyliveauction.com** platform: 

Please note that any lots purchased via easyliveauction.com live auction service will be subject to an **additional 4% commission charge** on the hammer price or no commission for the internet bidding if the **'Flat Free' of £3 sterling** has been chosen at registration.

We also offer bidding through **the-saleroom.com** platform: 

Please note that any lots purchased via the-saleroom.com live auction service will be subject to an **additional 5% commission charge** on the hammer price of each lot.

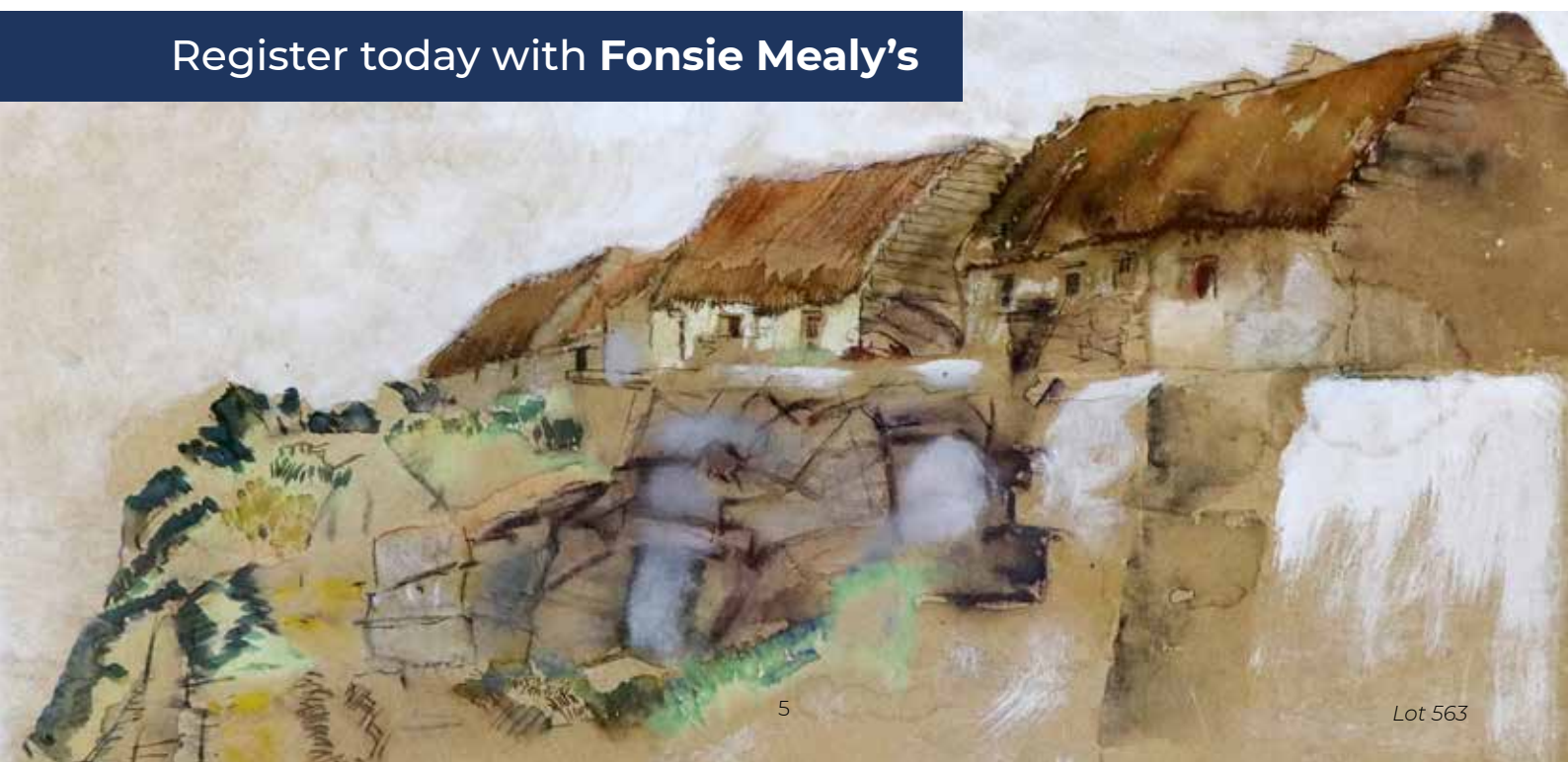
Register now for your own My Fonsie Mealy's Account to avail of auction alerts and information. Bidding has never been easier.

### **My Fonsie Mealy's**

To create an Account with Fonsie Mealy's log onto **www.fonsiemealys.ie** and register your details accordingly. When registration is completed, you can start benefiting from:

- Bid Live with One-click Bidding
- Leave AutoBids and Absentee Bids
- Arrange Telephone Bids
- Free Emailed Auction Alerts
- Manage Wish List, Won Lots and Bid
- View Invoices
- View Payments
- View Bid History

Register today with **Fonsie Mealy's**



# INFORMATION FOR BUYERS

## Absentee Bidding

Absentee bids must be received no later than 5pm on **Tuesday, March 4th, 2025**. Any bids received after this deadline cannot be guaranteed. If you are bidding with us for the first time then please contact our office for guidelines on registration.

## Telephone Bidding

Telephone bidding is available on lots with a pre-sale estimate of €500 or more.

**Registration for telephone bidding ends at 5pm on Tuesday, March 4th, 2025. (Bids will not be accepted day of sale.)**

Any requests for telephone bidding received after this deadline may not be processed. It would be advisable to leave a maximum covering bid in case we are not able to contact you by telephone.

## Condition Reports and Image Requests

We recommend that the buyer views the item(s) in person prior to the auction, or have a representative view the item(s) on their behalf. The Auctioneer will endeavour to make certain observations on the condition of items but the buyer is reminded that the condition report is based on opinion and should not be taken as a statement of fact.

All requests for condition reports and/or additional images of lots in this sale must be received no later than **12pm Friday, February 28th, 2025**. Any requests received after this deadline will not be entertained. We cannot guarantee that all such requests received will be answered by the sale day. All measurements are given height before width and are approximate.

Fonsie Mealy Auctioneers reserve the right to withdraw or adjust any lot prior to the auction without notice. Any such lots so affected will be announced on the auction day.

Fonsie Mealy Auctioneers reserve the right to control and determine the bidding increments, whether by telephone, online or in the room.

## Contact Details For Viewing and Sale Days

056 44 41229 | 056 44 46200  
info@fonsiemealy.ie

## Buyers Conditions

Buyers are reminded that there is a 25% V.A.T. inclusive premium payable on the final bid price for each lot. The Auctioneers are always pleased to advise clients and to execute bids on their behalf, but if successful, the purchase price payable will be the final bid price and the V.A.T. inclusive premium of 25% chargeable thereon. Bids must always be made or confirmed in writing or by email. It is the Bidders' responsibility to ensure that all Absentee and Telephone Bids are correct and accurately submitted to our office. To ensure that bids will be accepted and that delivery of Lots is not delayed, intending Buyers should supply bank or other suitable references to the Auctioneers prior to the auction. The references should be supplied in good time to be taken up before the sale. Bids are accepted in Euro only. Online bidding subject to surcharges.

N.B. Payment by: Cash, guaranteed cheques, wire transfer (contact accounts@fonsiemealy.ie), debit or credit card (mastercard/visa & subject to 3% surcharge, for payments outside the EU. All Cheques or Drafts to be made payable to "Fonsie Mealy Auctioneers". Third Party Cheques or Drafts will not be accepted as payment for lots purchased.  
**Cash Payments Subject to AML Regulations**

**Terms used in this catalogue have the meanings ascribed to them below:**

## Paintings, Prints, Works of Art, Furniture, etc.

*The first name or names and surname of the Artist or Craftsman:*

– In our opinion a work by the Artist or Craftsman.

*Attributed to:*

– In our opinion probably a work by the Artist or Craftsman but less certainty as to authorship is expressed than in the preceding category.

*Studio of:*

– In our opinion a work that may have been executed in whole or in part by the artist's hand.

*Circle of:*

– In our opinion a work of the period of the Artist or Craftsman that is in a similar style to the work of that Artist or Craftsman.

*The surname of the Artist or Craftsman, preceded by "After":*

– In our opinion, a copy of the work of the artist or craftsman.

*Signed, Stamped:*

– Has a signature or stamp, which in our opinion is the signature or stamp of the artist or craftsman.

*Bears Signature or Stamp:*

– Has a signature or stamp, which in our opinion might be the signature or stamp of the artist or craftsman.

*Dated:*

– Is so dated and in our opinion was executed at about that date.

*Bears Date:*

– Is so dated and in our opinion may have been executed at about that date.

All measurements are given height before width.

## Abbreviations

O.O.C. – Oils on Canvas

O.O.P. – Oils on Panel

O.O.B. – Oils on Board

O.R.M. – Of recent manufacture

W/C – Watercolour

GOU – Gouache

MAH. – Mahogany

VICT. – Victorian

EDW. – Edwardian

W.A.F. – With all faults

As Is – With all damages, faults, restorations, etc.

S.NS.R – Sold not subject to return.

## IMPORTANT NOTICE

While the auctioneer endeavours to answer clients enquiries, we accept no responsibility or liability for any inaccuracy in auction results given verbally during the sale day. We recommend that clients should only make such enquiries following the conclusion of the Sale.

**Fonsie Mealy's** Est. 1934

PSRA Registration No: 001687

Chatsworth Auction Rooms,  
Chatsworth St., Castlecomer,  
Co. Kilkenny, Ireland

T: +353 56 4441229  
E: info@fonsiemealy.ie  
W: www.fonsiemealy.ie



**1. A set of 3 Regency style Curtain Poles**, of various sizes with carved gilt ends. (3)

**€150-€200**



**2. A French style painted Armoire**, with arched cornice and panelled doors on a carved base with cabriole legs, 216cms high x 122cms wide (85" x 48"); together with a two drawer Bedside Locker, en-suite. (2)

**€200-€300**



**3. Attributed to The Harold Rathbone Della Robbia Studios Birkenhead**

**A terracotta glazed blue and white relief Panel**, with two standing Saints, 54cms x 19cms (21" x 7 1/2"), another bow fronted ditto with Young Saint holding a Cross, 48cms x 24cms (19" x 19 1/2") and one other larger ditto The Madonna & Child, 51cms x 39cms (20" x 15"). (3)

**€800-€1000**



**4. Two large metal Portrait Reliefs**, depicting Peter Paul Rubens and Rembrandt Van Rijn, each approx. 61cms (24") diameter. (2)

**€120-€150**



**5. A good pair of George III style ebonised and parcel gilt two branch Candle Sconces**, each with a ribbon bow crest above a carved eagle with outswept wings on two strands of ebonised ribbons with gilt tassels and two brass projecting candle arms, 40" (102cms). (2)

**€300-€400**



**6. A 19th Century giltwood Overmantel**, of low proportions, the arched top with central Adams Love Knot, the base flanked either side with carved leaf motifs, with original plate mirror, approx. 100cms x 140cms (39" x 55"). (1)

**€200-€300**



**7. A Georgian style mahogany Bracket Clock**, with brass carrying handle, the face with exposed chime above a circular dial with Roman & Arabic numerals, flanked with figural ormolu mounts with brass sabots, 46cms (18") high. (1)

**€180-€220**



**8. A late Victorian mahogany Side Table**, the gallery back over a frieze with three drawers and brass handles on turned legs, approx. 196cms wide x 92cms high (77" x 36"). (1)

**€180-€220**



**10. A Regency style mahogany Torchere**, with circular dish top and tripod base, 42" (106cms)h; together with two small tripod Wine Tables. (3)

**€140-€160**



**12. A pair of George II style carved giltwood cartouche shaped Candle Wall Lights**, each with a grotesque mask, C scrolls and leaf scrolls and leaf cast candle arm, 16 1/2" (42cms). (2)

**€400-€600**



**9. A very heavy Art Nouveau brass Fender**, of breakfront outline, probably by Liberty & Co., the frieze with ceramic inset opaline roundels and rosettes in relief, 60" (153cms). (1)

**€250-€320**



**11. A good 17th Century style carved oak high back Monks Bench or Hall Bench**, the high back with six panels, three line fold panels and three crested panels with scrolling foliage, under a frieze carved with a centre crest issuing scrolling foliage, over a rectangular lift up solid seat flanked with two carved arm rests with lion head terminals and three linen fold panels below 67"h x 53"w (171cms x 135cms). (1)

**€400-€600**



**13. A good pair of George II style English "Kit Kat" carved giltwood Picture Frames**, each egg and dart moulded frame with projecting corners with carved rosette to fit a painting of 28 1/2" x 22 1/4" (72cms x 57cms). (2)

**€300-€500**





**14. A Georgian mahogany bow fronted Chest**, of small proportions with ebony inlay over three long drawers and turned handles on bracket feet, 92cms wide x 49cms deep (36" x 19"). (1)

**€180-€220**



**16. A very large circular iron 20th Century Station Clock**, by Gents of Leicester, with painted dial, approx. 71cms (28") diameter. (1)

**€300-€400**



**19. A French Louis XV style sarcophagus shaped ormolu mounted Fuel Bin. (1)**

**€120-€140**



**15. A heavy brass tubular Table Lamp**, with circular base, together with an ebonised barley twist Torchiere on square base. (2)

**€100-€150**



**17. A very large iron framed Station Clock**, early 20th Century, approx. 64cms (25") diameter. (1)

**€200-€300**



**20. A mirror top Bedside Table**, with frieze drawer on cabriole legs, together with a circular padded Foot Stool of low proportions with carved legs, and another wooden Footstool with cane seat and carved legs. (3)

**€80-€120**



**18. A 19th Century carved mahogany pillar Hat and Coat Stand**, on outplayed reeded legs. (1)

**€120-€160**



**21. Samuel A. Rayner (Act. c. 1820 - 1874)**

"Battling on the Bridge of a Castle, probably Lichtenstein Castle, Germany," gouache, watercolour on paper laid on canvas, bears inscription on verso, 110cms x 89cms (43 1/2" x 35"). (1)

**€500-€800**



**22. A 19th Century mahogany framed Open Armchair**, covered in classical design fabric with shaped arms on reeded legs. (1)

**€180-€220**



**23. A modern silvered and painted shaped Pier Mirror. (1)**

**€70-€90**



**24. A good pair of large modern Cantonese style Chinese porcelain Table Lamps**, each with two double Foo Dog handles, and decorated with colourful flower surmounted with pink silk shades, 44" (112cms) overall. (2)

**€200-€300**



**25. A 19th Century French mahogany marble top Commode**, with four long drawers on bun feet, approx. 130cms wide x 89cms high (51" x 35"). (1)

**€300-€400**



**26. Pierre Lenoir, French (1879-1953)**

**A fine Henriot Quimper Figure**, of a Breton Woman in polychrome terracotta, approx. 27" (69cms). (1)

**€300-€500**



**27. A 19th Century mahogany Hanging Corner Cabinet**, the shaped cornice over inlaid frieze above an astragal glazed door, approx. 104cms (41") high. (1)  
**€120-€140**



**29. Hall - Irish School XX - XXI**  
 "Boats in a Harbour," O.O.C., signed lower left, approx. 45cms x 34cms (18" x 13") in wooden frame. (1)  
**€120-€140**



**31. After Claude Monet**  
 "Figures by a Lake," O.O.C., approx. 50cms x 60cms (20" x 24") in ornate gilt frame. (1)  
**€150-€180**



**28. Tony Paul XX - XXI**  
 "Shell Studies," O.O.B., signed lower right, 22cms x 30cms (9" x 12") in gilt frame. (1)  
**€150-€180**



**30. A pair of attractive ormolu two branch Wall Lights**, in the Adams taste (electrified), 64cms (25") high. (2)  
**€100-€150**



**32. An Italian style brass mounted ceramic two handled Vase and Cover**, and a pair of gilt metal Lamp or Candle Stands. (3)  
**€100-€120**



**33. A small late 19th Century French ormolu and porcelain Boudoir Mantlepiece Clock**, by Rollen, Paris, with circular convex enamel dial with Roman and Arabic numerals above porcelain panels, as is, with losses, 25cms x 23cms (9 1/2" x 9"). (1)

**€100-€200**



**34. A fine quality Regency period rosewood Chiffonier**, the shaped two tier stepped top with pierced brass gallery and turned pillars, on a base with two glazed doors, with brass mounts on plinth base, approx. 141cms high x 112cms wide x 38cms deep (55" x 44" x 15"). (1)

**€500-€700**



**35. Luigi Vittoroni - 19th Century Italian School**

A pair of attractive Italian Landscapes with figures, river and forest," O.O.C., approx. 51cms x 79cms (23" x 31"), in matching gilt and ebonised frames. (2)

**€250-€350**



**36. Early 20th Century English School**

A pair of Hunting Scenes, watercolour and wash, both indistinctly signed, 6 1/2" x 19 1/2" (17cms x 50cms). (2)

**€200-€300**



**37. A rectangular relief moulded Continental porcelain Casket with cover**, depicting hunting trophies, wild animals, various game birds, dogs, etc., as is, with losses, 33cms (13"). (1)

**€150-€200**



**38. A Regency style bronze and gilt bronze Table Centre**, modelled with three maidens holding a corona aloft on leaf moulded base with lion paw feet, 12" (30cms); together with an Empire style satin birch Planter, of square form with a brass lyre to two sides on ball feet, 8 1/2" x 8 1/2" (21cms x 21cms). O.R.M. (2)

**€180-€220**



**39. A French bronze and gilt bronze marble Clock**, surmounted with a saddled horse above a circular enamel dial with Roman numerals, the case applied with ornate mounts, 17 1/2" x 13" (45cms x 33cms) O.R.M. (1)  
**€180-€250**



**41. A fine Regency style walnut and burr walnut parcel gilt Console Table**, with oblong top, the frieze applied with leaf and shell carvings raised on two very ornate carved giltwood cabriole legs each with a lappet moulded head with carved rosettes terminating in large lion paw feet, 37" x 74" (94cms x 188cms). (1)  
**€500-€700**



**43. A 19th Century etched glass cushioned framed Venetian Mirror**, with etched panels of oblong octagonal shape, approx. 92cms x 72cms (36" x 28"). (1)  
**€300-€500**



**40. A speckled rouge marble obelisk brass mounted Table Lamp**, 26 1/2" (67cms), O.R.M. (1)  
**€80-€120**



**42. A 17th Century style elm lift top Coffer Chest**, with panelled front and sides, on square legs, 33" (84cms). (1)  
**€100-€200**



**44. A French gilt metal mounted and rouge marble Desk Stand**, with classical figure seated on vase shaped legs, 11 3/4" (30ms), O.R.M. (1)  
**€120-€150**



**45. A fine quality Ladies rosewood Bureau**, the plain top with pierced brass gallery over three frieze drawers with circular brass handles, ormolu mounts over a painted domed front depicting a group with a royal bird, opening to reveal a fitted interior over a frieze drawer, with ormolu mounts terminating on cabriole legs, approx. 76cms wide x 109cms high x 54cms deep (30" x 43" x 21"). (1)

**€300-€400**



**46. Two Spelter Classical Models of Phidias and Pericles**, each approx. 49cms (19") high. (2)

**€80-€120**



**47. A 19th Century mahogany breakfront Wall Cabinet**, with three astragal glazed doors, on a later kneehole base with four drawers on tapering reeded legs, 38 1/2" x 43" (98cms x 110cms). (2)

**€200-€300**



**48. A Victorian oblong Ottoman style mahogany framed and upholstered Foot Stool**, covered in blue damask. (1)

**€140-€180**



**49. Two black English Bowler Hats**, a grey Top Hat, and 5 Hunting Crops, each with stag horn handle and four with silver collars. (8)

**€140-€160**



**50. A Victorian mahogany framed Nursing Chair**, with deep button back fabric (worn) on front carved cariole legs; together with a 19th Century tripod Wine Table, together with a smaller ditto, as is. (3)

**€100-€150**



**51. A collection of carved Jade Items**, 20th Century and later, including Buddhas, Elephants, etc., as a lot. (6)

**€80-€100**



**52. Porcelain: A shell decorated Belleek Teapot**, a set of 4 graduating Mason Ironstone Jugs, a Majolica type Dish and Cover (as is), a collection of Chinese Cups and Saucers, a Copeland type Cherub, a female Doulton Figure and a Meissen type floral encrusted Dish. (as a lot) S.N.S.R.

**€100-€140**



**53. An early bulbous shaped blue and white Chinese porcelain tubular Vase**, with typical decorated panels, approx. 26cms (10") high; also a smaller 19th Century Chinese blue and white tubular Vase (with narrow neck) with dragon decoration and character mark to base, approx. 18cms (7") high and a Cantonese Famille Verte tubular Vase and cover (repaired) decorated with typical characters and motifs, approx. 25cms (10") high. (3)

**€200-€300**



**54. A pair of overpainted Portrait Photographic Prints**, "Lady & Gentleman," (members of the Lauder Family, Lafayette Studios) on canvas, each in Victorian gilt frame. (2)

**€50-€70**



**55. A modern Chinese yellow and blue ground baluster shaped porcelain Table Lamp**, with white blue and green shade, and another blue ground Table Lamp. (2)

**€150-€200**



**56. A good set of 16 Bristol blue glass Goblets**, 6 smaller ditto, a pair of flutes, a pot belly water jug, a beaker, three bowls and a pair of candle stands. (31)

**€200-€300**



**57. Four glass and steel top Mineral Syphons.** (4)

**€80-€100**



**58. A modern J shaped formica, glazed, and padded Home Bar**; together with a pair of matching Wall Shelves and four leather padded bar high Stools with steel bars. (7)

**€500-€700**



**59. A 19th Century mahogany framed Regulator Grandfather Clock**, the hood with reeded pillars and circular brass dial by Blackler of Taunton, the trunk with panel door half reeded columns on a box base with bracket feet, approx. 211cms (83") high. (1)

**€400-€600**



**61. A collection of miscellaneous Silver**, comprising a miniature Chester silver Dish Ring, a pair of Birmingham silver shell shaped Salts, a three piece Art Nouveau silver Condiment Set, another three piece Set, various silver plated and enamel with labels, and a Champagne Tap, as a lot. (1)

**€120-€150**



**63. A good pair of German porcelain Figures**, emblematic of Winter & Autumn, probably Meissen, 14cms (5 1/2"), a pair of nodding head Turk Figures each in a kneeling position, 12cms (4 1/2"), a pair of nodding head Bisque Figures of boxing boys with bulging eyes, 17cms (6 1/2"), a brass Figure of Humpty Dumpty sitting on a Wall, Penny Box, 15cms (6"), two glass Paperweights and two Model Eggs. (11)

**€250-€320**



**60. Two pairs of carved hardwood Carpet Balls**, 3" (13cms) the larger pair. (4)

**€60-€90**



**62. A Longman & Broderip square Pianoforte, c. 1790**, with oval white enamel name plate, the rectangular mahogany case inlaid with fish bone bands, 33" (84cms) keyboard on stand with four square tapering legs united with a concave shelf and now with an inlaid breakfront cabinet top (associated) with a pierced three-quarter gallery and six urn finials above four astragal glazed doors, 76"h x 62"w (193cms x 157cms). (1)

**€400-€600**



**64. A Wedgwood Candle Holder**, four miniature porcelain Figures of elegant Ladies, two miniature Ansley Figures, three Halcyon Days enamel items, a Gents brass cased Pocket Watch, a Crown Staffordshire Flower Basket and some other miscellaneous items. As a lot. , w.a.f. (14)

**€50-€70**





**65. A good pair of Masons patent Ironstone Side Plates,** transfer painted in red, white and blue with chinoiserie scenes, 20cms (8"); a dark blue Carltonware chinoiserie pattern Bowl 24cms (9 1/2); a square hand painted Carltonware Ashtray, a six piece Granger & Co. Worcester blue and white Tete á Tete Coffee Set, and four Royal Worcester blue and white Coffee Cans & Saucers. As a lot, w.a.f. (18)

**€150-€250**



**66. A Victorian porcelain Toilet Ewer,** in red and white and two oval decorated panels depicting scenery, 14" (36cms). (1)

**€80-€150**

**67. A large Lladro Group,** modelled with a couple seated on a lovers settee with dog, 23cms x 27cms (9" x 10 1/2"); and a Tengra Figure of a young Girl, 38cms (11"). (2)

**€60-€80**



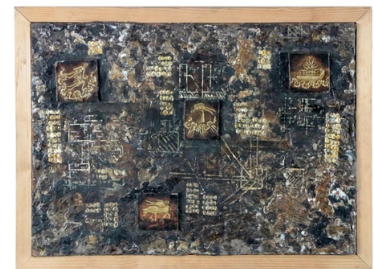
**68. A small modern blue and white porcelain Foot Bath,** together with two larger colourful two handled oval ditto, 19 1/2" (49cms). (3)

**€150-€250**

**69. William Albert Clark (1880 - 1963)**

"White Hunter with female Jockey Up," O.O.C., Signed lower left, 51cms x 61cms (20" x 24"). (1)

**€400-€600**



**70. Ciaran O'Cearnaigh, Irish Contemporary**

*Abstract, Mixed Media on board,* 28cms x 38cms (11" x 15"). (1)

**€200-€300**



**71. A.Khoop**

"Interior Scene with a Cavalier by a Window," O.O.B., signed, 10" x 6" (26cms x 15cms). (1)

**€140-€160**



**73. A fine 19th Century walnut Longcase Clock,** the break arch brass dial signed "Anderson, Newcastle upon Tyne," with date aperture, seconds dial and strike/silent dial in its arch; with pendulum and door and winding keys, 228cms (90"). high (1)

**€350-€450**



**75. A pair of very unusual treble glazed Pottery Vases,** each of baluster form, 46cms (18"); together with a pair of Staffordshire Lion Figures. (4)

**€80-€120**



**72. Dutch School - 19th / 20th Century**

"Landscape with Windmill," O.O.C., indistinctly Signed, 59cms x 79cms (23" x 31"). (1)

**€150-€220**



**74. A large William IV period mahogany Chest of drawers,** with three concealed drawers to the frieze and three long and two short drawers below and raised on ogee bracket feet, 140cms x 135cms (55" x 53"). (1)

**€350-€550**



**76. A pair of 19th Century Minton blanc-de-chine figural Sweet Meat Stands,** modelled with young man and girl leaning on baskets, 8" (20cms). (2)

**€150-€180**



**77. Brian C. Lamxxxxxy (XX-XI)**

"Street Scene with Church View," watercolour indistinctly Signed 40cms x 26cms (16" x 10"); another small watercolour "Coastal Scene" Signed Maude E. Maginniss, 12cms x 17cms (5" x 6 3/4"). (2)

**€80-€120**



**78. A late 19th Century Linen Press,** with hand mechanical top on a base with single drawer and panelled doors with bun feet. (1)

**€200-€300**



**79. A set of 3 pink enamel and silver bracket Brushes,** a matching hand mirror, a carved wooden glove box and a porcelain shoe. (6)

**€100-€200**



**80. A large heavy onyx three piece Mantle Clock Garniture,** the arch formed case with gilt metal mounts, surmounted with a stag over a circular brass dial with Arabic numerals on a rectangular moulded plinth (lacking movement) together with two matching Tazzi, 46cms x 50cms (26" x 19 1/2") - clock; 26cms (10"). (3)

**€150-€250**



**81. A George IV inlaid mahogany bow fronted Sideboard,** with three-quarter gallery above one long and two short frieze drawers and two cupboards below on square tapering legs, 73" (185cms)w. (1)

**€350-€450**



**82. A cutglass and cranberry flashed Table Service,** comprising four various decanters, a comport on stem base, four finger bowls and 10 various glasses. (19)

**€150-€180**



**83. A pink and white ground Sevres style porcelain Coffee Set**, each saucer decorated with a different landscape (10), the cups decorated with courting couples (9) and a pair of matching beakers. (21)  
**€150-€250**



**84. A 12 piece Czechoslovakian porcelain Coffee Set**, each piece with classical scene, a blue and white Meissen porcelain Coffee Cup and Saucer, a Meissen porcelain Saucer with couple in a garden, a decorative armorial Cache Pot, a Samson of Paris armorial Sauceboat, a Samson Imari pattern Sauce Tureen and cover, various Chinese porcelain blue and white Dishes and Bowls and four Chinese Famille Rose small Dishes. (23)  
**€180-€220**



**85. A Royal Dux porcelain figural Group**, of mother and child, with father in working attire, approx. 54cms (21"). (1)  
**€80-€120**



**86. A pair of two branch giltwood Wall Lights**, with Prince of Wales Plume design and a reeded tapering stem, approx. 61cms (24"). (2)  
**€120-€140**



**87. A large Victorian ornate giltwood framed Mirror**, with bevelled glass, approx. 110cms x 130cms (43" x 51") (1)  
**€150-€180**



**88. A pair of Waterford Marquis Martini Glasses**, cased, another cased pair, a Waterford crystal variety Bowl cased, a set of 4 Waterford Marquis white Wines, cased, and another cased set of 4, a Villeroy and Boch Fresh Garden Charm Set cased, a Masons ironstone Vase cased, a Wedgwood glass Picture Frame, a five piece one place Wedgwood Cutlery Set, a cased Waterford letter Opener, a Waterford Cake Server, and a Waterford crystal Bud Vase. (12 cases), as a lot, w.a.f. (1)  
**€150-€220**



**89. A large Art Nouveau leaded stain glass Panel**, 87cms (34"). (1)  
**€100-€150**



**90. Adelaide L. Haslegrave  
(XIX-XX)**

"The Plough Team at Dusk,"  
watercolour, signed 34cms x 50cms  
(13 1/2" x 19 3/4"). (1)

**€200-€300**



**91. An early 20th Century  
French Vernis Martin style brass  
mounted Vitrine**, the three-quarter  
gallery around a marble top, above a  
glazed door and a decorated lower  
panel, depicting 'A Courting Couple  
in a Garden,' signed, on short  
cabriole legs, 150cms x 66cms (59"  
x 26"). (1)

**€400-€500**



**92. A carved oak Longcase  
Clock**, with painted dial and Roman  
numerals above a trunk door carved  
with a crest and scrolling ivy on a  
panelled box base, 74" x 18"  
(188cms x 46cms). (1)

**€100-€200**



**93. A Victorian papier mache  
Tea Caddy**, inlaid with mother-o-  
pearl, the hinged top opening to  
reveal two lidded compartments, 7  
3/4" (20cms), a pair of ebonised  
Book Ends and a pair of brass  
Candlesticks. (3)

**€120-€150**



**94. A fine quality Louis XVI  
style Vitrine**, the marbled inset top  
with pieced brass gallery over the  
decorative frieze above a large  
glazed door and panelled sides with  
ornate ormolu mounts, on cabriole  
legs with brass sabots, approx.  
152cms high x 67cms wide x 33cms  
deep (60" x 26 1/2" x 13"). (1)

**€250-€450**



**95. A good late 18th Century  
blue and white Warming Stand**,  
with fishermen in a landscape, 9  
3/4" (25cms), a Copeland Spode  
Imari pattern Dish, 5 Italian Majolica  
type Asparagus Dishes and a set of  
12 cranberry glass Beakers,  
decorated with flowers and gilt, 4"  
(10cms), and a blue enamel pot and  
cover; nine similar glass Piggins,  
each with two spouts, three glass  
Finger Bowls, a set of 6 cranberry  
glass Wines, and three others. (a  
lot)

**€80-€150**



**96. A five piece tortoiseshell and silver Vanity Set**, comprising a hand mirror and four brushes, another silver hand mirror, a cutglass and silver mounted Inkstand, four cutglass and silver mounted Perfume Bottles and two other items. (a lot).

**€100-€150**



**97. A 12 piece English Imari pattern part Dessert Service**, comprising a pair of comports and ten plates, (all as is). (12)

**€100-€200**



**98. A Victorian style ornate giltwood framed Mirror**, with bevelled glass, approx. 84cms x 100cms (33" x 39"). (1)

**€100-€150**



**99. A Georgian mahogany slope front Bureau**, opening to reveal a fitted interior with pigeon holes etc., above two short and three long drawers with brass handles and escutcheons on bracket feet, 100cms wide x 110cms high (39" x 43"). (1)

**€200-€300**



**100. 19th Century English School**

"Young Girl Reading," O.O.B., approx. 16cms x 14cms (6 1/4" x 5 1/2"); together with a watercolour of "Roses," indistinctly signed in gilt frame and a Baxter Print of "The Queen Landing in Cobh, Co. Cork." (3)

**€200-€300**



**101. A pair of 20th Chinese heavy brass medallion Ceremonial Sceptres**, with Chinese text and dragon motif with ebonised handles, approx. 132cms (52"). (2)

**€200-€300**



**102. An important early Irish Georgian mahogany Door Relic,** with eight carved panels decorated in floral roundels in relief (lacks one panel at base) as is. (1)

Ref: Flora Mitchell's 'Vanishing Dublin'.  
\*\* Crampton Court

This was the unofficial Exchange of Dublin until the 'Commercial Buildings' were opened in 1799. No. 20, 'The Little Dublin Coffee House', provided the Merchants with a meeting place prior to this, and the doors shown in the picture date from 1750.

Visitors to Dublin have sought out this romantic old court for the past fifty years or so, and the passages leading to it have been a short cut from the Olympia Theatre to the well known Dolphin Restaurant, used by Dubliners throughout this century. The court has only been pulled down recently, though for the past sixty years it had been sinking into a gradual state of decay.

The paneling of the interiors of the houses survived the damp and rigour of the years, and at the time of demolition (1963) the unique door showed few signs of deterioration. One cannot help wondering where these lovely old doors are now.

**€500-€600**



**103. A pair of attractive 19th Century oval concave design Panels,** with painted young girls, in gilt frames; together with a needlework Tapestry with young girl kneeling with dog, in rosewood frame. (3)

**€80-€100**



**104. An attractive pair of Adams style brass two branch Wall Lights,** each with ribbon bow crest, 61cms (24") together with another pair of rococo style ditto, each with three lights. (4)

**€150-€200**



**105. 20th Century English School**

A pair of Pastoral Scenes with chickens in farmyards, O.O.C., approx. 50cms x 60cms (20" x 24"), in matching gilt frames. (2)

**€150-€200**



**106. 20th Century Continental School**

A pair of Street Scenes with figures, river and buildings, approx. 24cms x 19cms (9 1/2" x 7 1/2") in matching gilt frames. (2)

**€150-€200**



**107. A 19th Century Neo Gothic Wall Shrine**, in carved fruitwood, probably French, with Madonna & Child, 26 1/2" x 11" (67cms x 28cms). (1)

**€250-€350**



**109. An early 20th Century mahogany chiming Mantle Clock**, with arched and silvered dial with Roman & Arabic numerals, signed Eynon Narbeth, 14" x 11" (36cms x 28cms). (1)

**€80-€150**



**111. A large brass Fender**, late 19th Century, with square tubular reeded top rail with urn finials on a balustrade with moulded base, 60" (152cms). (1)

**€70-€100**



**108. A good heavy pair of black painted cast iron figural Andirons**, each with bulbous centre and surmounted with a standing cherub on quatrefoil base, 69cms (27").

**€200-€300**



**110. A 19th Century mahogany bow fronted Sideboard**, with gallery back and inlaid shell decorated centre, above three frieze drawers, side presses, on square tapering legs, approx. 163cms wide x 56cms deep (64" x 22"). (1)

**€200-€300**



**112. An early carved white marble Funerary Urn**, draped and concealing two handles, over a garland of flowers on socle and square plinth. (1)

**€500-€800**





**113. A cased set of 6 Sheffield silver Coffee Spoons, 1938, a set of 6 late Victorian silver Coffee Spoons, another set of 6 Coffee Spoons, Sheffield 1930, a cased set of 6 bright cut silver Coffee Spoons, a cased set of 4 Art Nouveau silver Buttons, and a cased pair of London silver Cream Spoons, c. 1900. (a lot)**  
**€140-€160**



**115. A Chinese Famille Verte porcelain barrel shaped Garden Seat, with pierced top and side panels, the main body with numerous figures on a wooden stand, 74cms (29") overall. (1)**  
**€200-€300**



**117. E. Stafford James - Early 20th Century English School**  
 "Bristol Cathedral with Statue of Queen Victoria on Cottage Green," O.O.C., 23" x 19 1/2" (58cms x 49cms). (1)  
**€150-€200**



**114. A cased silver backed Brush and Mirror Set, together with another Brush, Comb and Hand Mirror, and a cased Shoe Horn and Lace Pull. (7)**  
**€130-€170**



**116. 19th Century English School**  
 "Dunure Castle on the Ayrshire Coast," O.O.B., 29cms x 39cms (11" x 15 1/2"). (1)  
**€80-€120**



**118. Eastern European School (XIX-XX)**  
 "Winter Landscape with Figures and Dog in a Country Church Yard," O.O.C., 46cms x 68cms (18" x 27"). (1)  
**€150-€220**



**119. A late 19th Century / early 20th Century French satinwood and marquetry Cabinet**, with brass mounts, the arched upper section crested with an oval Sèvres style painted porcelain panel above a shaped shelf, and an arched and glazed center display section flanked with porcelain mounted pilasters and two narrow cupboard doors to either side, with brass and porcelain mounts on a base with large glazed door flanked with conforming pilasters and raised on a shaped plinth 186cms x 120cms (73" x 47"). (1)

**€700-€800**



**120. A white monochrome Wedgwood porcelain Dinner, Tea and Coffee Service**, candlelight pattern, 8 place setting with dinner plates, side plates, desert plates, tea / coffee cups, saucers, oval meat dish, sugar and cream, sauceboat and stand, coffee pot, teapot, soup bowls, vegetable tureen and cover and a serving bowl. (a lot)

**€150-€250**



**121. Celia Richards (XX - XXI)**

Still Life "Vegetables, Bottles and Pot on a Table," O.O.C., signed, 17" x 23" (43cms x 58cms). (1)

**€200-€300**



**122. An 18th Century style panelled oak Cupboard**, with a single narrow door on turned legs. (1)

**€140-€160**



**123. A set of 3 brass Fire Irons**, each with bulbous finial, together with another pair of figural Fire Irons comprising a poker and shovel and a brass Fire Tidy Stand, all O.R.M. (6)

**€100-€150**



**124. A carved oak Buffet or Food Cupboard**, 18th Century and later, the moulded top above a ribbon moulded interlaced frieze above a single panel door and two panel doors below on stile legs, 125cms x 94cms (49" x 37"). (1)

**€200-€300**



**125. Naval Interest: A wooden Footstool**, constructed from the timber removed from H.M.S. Britannia (Cadet Training Ship at Dartmouth 1869-1905), with plaque. (1)  
**€60-€80**



**127. Gilbert Wright - 20th Century English School**  
 "Sisi and Hunting Party at Gate with Horses and Hounds," O.O.C., in gilt frame, signed lower right, 46cms x 61cms (18" x 24"). (1)  
**€180-€220**

**129. A two door brass mounted French Wardrobe**, early 20th Century, with two mirror panels on a plinth base, 76"h x 42"w (193cms x 107cms). (1)  
**€100-€150**



**130. Late 19th Century (Probably American School)**

"Portrait of a Gentleman with black bow tie, cream waist coat and black jacket with moustache and side locks," oval, O.O.C., in rosewood frame, 66cms x 56cms (26" x 22"). (1)  
**€100-€200**



**126. 19th Century Italian School**  
 "Large Villa with Numerous Figures on a Bridge over Lake," gouache and watercolour, 22.5cms x 30cms (9" x 11 1/2"). (1)  
**€200-€300**



**128. M. O'Connell (XX - XXI) Irish School**  
 A set of 8 very attractive and colourful Watercolours, depicting various flowers, all signed, some dated 1996. (8)  
**€300-€400**



**131. A large 19th Century oak lift top Chest**, with panel front and sides on bracket base, 89cms h x 157cms wide x 54cms d (35" x 62" x 21"). (1)  
**€200-€300**





**132. An Edwardian marquetry inlaid Tray**, of rectangular serpentine form with two brass handles, 58cms (23"). (1)  
**€100-€120**



**134. After John Wooten**  
 "Horse and Jockey with Hounds in Landscape," O.O.C., in gilt frame, 50cms x 60cms (20" x 24"). (1)  
**€100-€150**



**136. A pair of late 18th Century / early 19th Century carved and ebonised Reliefs**, with head portraits and grotesque mask, each approx. 30cms x 40cms (16" x 12"). (2)  
**€180-€220**



**133. An unusual Queen Anne style mahogany triptych Dressing Table Mirror**, with three arched plates on a serpentine shaped base with three drawers, 26" x 29" (66cms x 74cms); together with an ebonised triptych needlework Table Screen, 27 1/2" (70cms). (2)  
**€100-€200**



**135. May McNamara XX-XXI**  
 "Horses Head," O.O.C., 33cms x 28cms (13" x 11") in gilt frame. (1)  
**€80-€120**



**137. A heavy World War II brass Shell Case**, dated 1943, 58cms (23") and another Shell with round, 44cms (17 1/2"); together with a large yellow ground Chinese style Crackleware Bottle Vase, converted to a Table Lamp, 84cms (33"), as is. (3)  
**€120-€180**



**138. A George IV style mahogany tall Chest**, with eight graduating drawers under a moulded cornice on bracket feet, 158cms h x 64cms w (62" x 25"). (1)

**€350-€450**



**140. Camille Fonce, French (1867-1937)**

"Interior of Reims Cathedral," coloured etching, signed 64cms x 50cms (25" x 20") published by Arthur Booth and Sons, London 1915, mounted and framed. (1)

**€200-€300**



**142. Equestrian Interest:** Amber Point, winner of the Galway Plate (1954-1956) painted photograph, 40cms x 50cms (16" x 20"), in gilt frame. (1)

**€40-€60**



**139. A good collection of miscellaneous antique Pewter**, comprising a large shell shaped Disk, on four eagle ball n' claw feet, 16" (41cms), a tall double litre Flagon, a pair of 9" (23cms) Plates, two similar 9 1/2 (24cms) a large London Platter, 13 1/4" (34cms), another 15" (38cms), a very large Platter 18" (46cms) and other miscellaneous pewter Measures, Jugs, Candlesticks etc. (a lot)

**€200-€300**



**141. A pair of Louis XV style Open Armchairs**, the arched back with carved tops above embroidered back and conforming seat, the padded scroll arm with leaf decoration on front shaped tapering legs. (2)

**€250-€350**



**143. 19th Century Continental School**

"Landscape with Cow, Sheep & Goat," O.O.C., as is, 41cms x 58cms (16" x 23"). (1)

**€100-€150**



**144. A pair of Chinese style crackleware porcelain Table Lamps**, with brass mounts in the form of four rams masks and floral swags, each 56cms (22")h. (2)  
**€100-€200**



**146. A large pair of early black and white Engravings**, one depicting "St. Peters Square in the Vatican City with St. Peters Basilica," the other "Crowded Interior of the Basilica," both encrusted and in moulded gilt frame, 71cms x 97cms (28" x 38"). (2)  
**€300-€500**



**148. A fine quality Georgian period Chest of drawers**, the crossbanded top over a frieze with three short drawers above two short and three long drawers, all with ornate brass handles and escutcheons, 100cms wide x 106cms high x 54cms deep (39" x 42" x 21"). (1)  
**€300-€400**



**145. An Empire style mahogany Portico Clock**, with ornate brass mounts and a circular silvered dial with Roman numerals and four columns, on a two stage rectangular base, 18" x 9 1/2" (46cms x 24cms). (1)  
**€200-€300**



**147. Two framed stain glass Panels**, each approx. 66cms x 99cms (26" x 39"), in wooden frames. (2)  
**€120-€180**



**149. 18th Century Continental School**  
 "Female Figure with Young Child and Elderly Man seated, in classical attire," O.O.C., 74cms x 61cms (29" x 24") in wooden frame. (1)  
**€150-€200**



**150. J. Morison - 20th Century English School**

"Man Fishing in center of River with waterfall in distance, in forest area," 24cms x 35cms (9 1/2" x 13 1/2"), signed lower left, mounted gilt frame. (1)

**€80-€100**



**152. A monumental fine quality Victorian mahogany mirror back Sideboard**, the arched top with carved cornice with egg and dart moulded rim, the base with inverted top with frieze drawers, open center flanked each side with carved panel doors, on a plinth base, 246cms wide x 264cms high x 79cms deep (97" x 104" x 31"). (1)

**€500-€700**



**154. A pair of white painted cast iron figures of Rabbits**, 30cms (12"). (2)

**€80-€120**



**151. Muller - early 20th Century**

"Dog following Deer at the Edge of a Wood," 38cms x 36cms (11" x 14"). (1)

**€100-€150**



**153. A large pair of bronzed metal figural Candelabra**, each with four arms and a centre light (one arm missing) each modelled as a classical maiden seated on a rock on a circular polished slate base. (2) O.R.M.

**€120-€180**



**155. An Egyptian Revival black slate and variegated marble Mantle Clock**, (lacking movement), the top surmounted with a reclining sphinx in bronzed spelter, the circular brass mounted dial with Roman numerals and signed Walls & McCullach, 43cms x 39cms (17" x 15").

**€100-€150**



**156. A pair of Imari style baluster vase shaped brass mounted Table Lamps**, each with two cast leaf scroll handles, 54cms (21") (2) O.R.M.

**€250-€320**



**159. An oak Wall Clock**, with a square painted dial, signed Hen. Stewart, Dublin, with its two original heavy wedge shaped weights, 147cms (58"). (1)

**€300-€400**



**162. Three various silver plated Toast Racks**, a silver plated turn-over Butter Dish, a pierced and silver plated Fish Slice, a plated Fish Serving Fork, a large Basting Spoon, a plated Indian Bowl, two Tea Strainers, a quantity of various Cutlery, 14 matching Knives and other assorted Plateware. (a lot).

**€70-€100**



**157. A pair of lime green Table Lamps**, with leaf design shades, together with a pair of two tone black and grey Table Lamps. (4)

**€80-€120**



**160. An Art Nouveau Art Glass handkerchief Vase**, 12 1/2" (32cms). (1)

**€60-€80**



**163. A mahogany Wardrobe**, in the Chippendale style, with moulded cornice above two astragal glazed doors on a leaf carved base and leaf carved claw and ball feet, 196cms x 127cms (77" x 50"). (1)

**€150-€250**



**158. A 17th Century style oak lift top Coffin Chest**, with double panel lift top and double panel front, on style feet, 37" (94cms). (1)

**€120-€150**



**161. A large collection of cased Irish, English & Scottish Road Maps**. (4)

**€70-€90**





**164. After J.F. Herring**

A set of 4 coloured Prints, each approx. 41cms x 57cms (16" x 22 1/2"), in matching frames. (4)

**€40-€60**



**166. Grainne Cuffe, Irish (XX - XXI)**

"Herald of Light," floral study Limited Edition Lithograph 47/60, 117cms x 107cms (46" x 42"), in gilt frame. (1)

**€120-€180**



**168. A pair of large plaster Figures**, of classical females, one holding a sphere, the other with a bunch of grapes, 92cms (36"). (2)

**€400-€600**



**167. A pair of French walnut marble top Bedside Commodes**, each with a frieze drawer over a cupboard door on four moulded cabriole legs, 84cms x 37cms (33" x 14 1/2"). (2)

**€150-€220**



**165. M. O'Connell (XX - XXI)**

"View of Waterford from the River," watercolour signed and dated 1995, 9" x 12" (23cms x 30cms), another similar View also signed and dated 1996, a larger ditto unsigned "View of Reginald's Tower," 13" x 17" (33cms x 43cms), and one other depicting "Tall Ships," signed and dated 1992, 15" x 22" (38cms x 55cms). (4)

**€250-€350**



**169. A 19th Century large attractive cream ground floral decorated Aubusson Tapestry**, 249cms high x 310cms wide (98" x 122"). (1)

**€400-€600**



**170. A cased set of 24 silver plated Fish Knives and Forks, crested (one odd fork), a cased set of 12 plated Fish Knives, crested on the silver handles, a cased set of 24 silver handled Fruit Knives, a cased set of 24 mother-o-pearl handled Fruit Knives & Forks. (4)**

**€100-€200**



**172. A heavy silver plated Gothic style triptych Icon, depicting Madonna & Child Christ seated amongst saints and angels, above an oval font, 8" (20cms) extended, an oval marble relief Madonna & Child, a Continental porcelain miniature Portrait of St. Joseph and the Child Jesus and a carved wooden Figure of the Madonna and a pewter Candlestick, and a printed Icon Madonna & Child. (6)**

**€140-€160**



**174. A heavy cutglass basket shaped Bowl, 10" (26cms); another cutglass stem Bowl on square foot, 9 1/2" (24cms) and a cutglass Biscuit Jar and cover, probably Waterford, 6" (15cms). (3)**

**€120-€180**



**171. Two similar Serves style two handled porcelain and brass mounted Vases & Covers, each dark blue ground with print panels, 74cms (29"). (2) O.R.M.**

**€150-€220**



**173. A Louis XV style French brass rococo design Mantle Clock, with urn finial above a decorated body with enamel dial, marked Richard, approx. 66cms high (26"). (1)**

**€180-€220**



**175. A fine quality Victorian Irish mahogany inverted breakfront pedestal Sideboard, in the manner of Strahan, with oak leaf design back the sunken center, with platform sides above three frieze drawers, the open center flanked each side with panel doors and barley twist capitals on plinth base, 150cms high x 84cms deep x 254cms wide (59" x 33" x 100"). (1)**

**€400-€600**



**176. A good pair of English red ground porcelain barrel shaped Garden Seats**, each in the chinoiserie style, depicting figures with pierced sides and seats, probably Masons, 18 1/2" (47cms)h. (2)  
**€400-€600**



**178. A good Victorian mahogany Sectaire Bookcase**, the moulded cornice above two arched and glazed doors above a drop front frieze drawer enclosing drawers and pigeon hole compartments and a tooled leather writing surface and two arched solid panel doors below on a plinth base, 87" x 49" (221cms x 124cms). (1)  
**€500-€700**



**180. A collection of carved African Figures.** (a lot)  
**€80-€120**



**177. A Victorian Needlework Roundel**, depicting a mother holding her two children in ornate gilt frame with crested corners; also a Print after Henry Alken of "Meeting at Cover," coloured print, in maple frame and two other large coloured Prints entitled "Afternoon Rehearsal, and the Golfers," as a lot, w.a.f. (4)  
**€150-€200**



**179. A collection of 18th Century blue and white Worcester porcelain and other blue and white English Porcelain**, comprising a bulbous reeded teapot and cover with blue crescent mark, a matching sugar bowl, various cups and bowls, a pair of square lobed dishes, a pair of hexagonal dishes, a sparrow beak jug, a small sauceboat and some plates, approx. 23 pieces. (23)  
**€200-€300**



**181. A collection of Sea Shells, and other Marine Specimens**, as a lot, w.a.f. (a lot)  
**€120-€180**



**182. A pair of silver plated circular Wine Coasters**, each with gadroon edge, 15cms (6"). (2)  
**€60-€80**



**185. A Japanese bronze Incense Burner**, Meiji period of square form with pierced cover surmounted with a standing figure, the body with mythical beasts in relief on four masks headed scroll legs, 16cms (6"), a small Japanese bronze Figure and two small Indian bronze Figures. (4)  
**€150-€200**



**187. A leaf carved and moulded mahogany Wall Bracket**, 25cms x 33cms (10" x 13"); together with another similar ditto. (2)  
**€200-€300**



**183. L. Saatborn XX- XXI**

Still Life, "Fruit Bowl, Wine Bottle and Lamp," 140cms high x 107cms wide (55" x 42"), signed lower right in painted frame. (1)  
**€300-€400**



**184. A tall narrow oak Open Bookcase**, with moulded and carved cornice with adjustable shelves, approx. 159cms x 62cms (62 1/2" x 24 1/2"). (1)  
**€150-€180**



**186. A pair of Serves style celeste blue porcelain Urns**, decorated with figures and flowers each on circular brass base, 18cms (7"); together with a pair of cast brass and celeste blue porcelain Candlesticks decorated with flowers on tripod base, 17cms (6 1/2"). (4)  
**€150-€200**



**188. 19th Century Continental School**  
 "Alpine Scene with Girl herding a cow, calf and sheep," O.O.C., 49cms x 61cms (19" x 24"). (1)  
**€100-€150**



**189. John King**

"The Meynell" Limited Edn., signed No. 236/500; "The Quorn," Limited Edn., signed No. 285/500, in matching frames. (2)

**€120-€180**



**191. A Georgian style classical Bust on Wall Bracket**, depicting a classical Woman in painted plaster, 30cms (11 1/2"). (1)

**€80-€150**



**193. A very good Royal Crown Derby green ground Vase** with two gilt handles and floral panels signed Albert Gregory, 28cms; A Royal Worcester Pate-sur-Pate blue ground porcelain Vase, with two gilt handles and with classical bust of Mercury in relief, 20cms (8"); a Royal Worcester floral decorated Biscuit Jar with metal mount and cover, Rd No. 112589 - 1451, 15cms (6"), a Royal Crown Derby Dish decorated with butterfly and flowers, 24cms (9 1/2"), a Royal Worcester relief moulded circular Bowl. (5)

**€400-€600**



**190. A large Renaissance Revival Italian Majolica tin glazed Dish**, late 19th Century Roma 1878, in the Persian style decorated with a kneeling figure inside a border of wild animals, 47cms (18 1/2"). (1)

**€300-€400**



**192. A Chinese Famille Rose Teapot**, of cylindrical form decorated with flowers, two small Chinese Famille Rose Bowls, a pair of small Chinese blue and white Chinese Pots, 6cms (2 1/4"), a Cantonese Saucer, 16cms (6 1/4"), a Chinese carved Jadeite Figure of Deity 13cms (5"), a miniature Cantonese Vase, a small Japanese Dish, and a Satsuma crackleware Vase, decorated with a warrior, 32cms (12 1/2"). (10)

**€100-€200**



**194. A French oval Miniature Portrait** of "Marie Antoinette", on porcelain in ornate moulded gilt frame, 8cms (3"); together with a large oval Serves style porcelain Plaque, painted with colourful flowers within a gilt border, 25cms x 19cms (10" x 7 1/2"). (2)

**€200-€300**



**195. A rare Vintage Mamod Steam Driver Scale Model Roadster**, 39cms (15"), in original box with instructions; together with another Steam Engine "The Mamod Steam Tractor," 26cms (10") good condition. (2)

€200-€300

**197. A Regency style gilt Convex Wall Mirror**, the circular ball moulded frame with an eagle crest issuing leaf sprays and a string of beads from the beak, 62cms x 44cms (24" x 17"). (1)

€200-€300



**200. A pair of Japanese Satsuma Bottle Vases**, decorated with children 9" (22cms), together with a pair of Japanese Satsuma Ginger Jars and Covers, a carved white marble Figure of a recumbent hound on a plinth 8" (20cms). (5)

€120-€150



**198. A miniature five piece silver Coffee & Tea Service**, including oblong tray, a pair of silver salts, a filigree powder compact, a Birmingham silver basket salt, three copper decanter labels, a plated ditto, a pocket cork opener, three clockwork spring operated toys (2 birds & red bus) a cased enamel magnifying glass and some other miscellaneous items. (a lot)

€100-€120



**201. A pair of Japanese lacquered folding Wall Brackets**, with Japanese figures on balconies, each 19cms (7 1/2"), a rectangular lacquered Box, 17cms (6 1/2"); a heavy rouge marble Vase, 23cms (9"); and a pair of modern Terrestrial Globe Book Ends. (6)

€120-€150

**196. A miscellaneous Collection of Items**, Chinese and Indian, figures, animals, fans, letter openers, necklace etc. As a lot, w.a.f. (1)

€40-€60



**199. A composition demi-lune Wall Bracket**, modelled with a cherub head with wings, 30cms (12"); together with another similar ditto modelled as a reclining Cherub, 31cms (12 1/2"). (2)

€100-€150





**202. A 19th Century brass mounted mahogany Table Stand**, with bead tapestry centre in oblong moulded frame with bowed ends, 56cms (22"), and a carved wooden Black Forest Wall Bracket with stag head. (2)

**€120-€180**



**204. An attractive floral Bouquet Model**, made from porcelain, in coloured glass vase inside glass dome; together with a shell design Bouquet, inside glass dome; together with a small casket shaped glass ditto with shells. (3)

**€200-€300**



**206. Two similar oblong Goblines style machine made Tapestries**, one with a scene after David Teniers, the other depicting a Garden Party with elegant figures merrymaking, each in similar moulded gilt frame, 61cms x 155cms (25" x 61") approx. (2)

**€300-€400**



**203. A relief cast composition Panel**, depicting a classical scene with cherubs and lion, 25cms x 50cms. (1)

**€120-€150**



**205. A heavy bronze Jewellery Casket**, probably German, chased in relief with hunting scenes and hunting trophies of rectangular form with caned corners, 20cms (8"). (1)

**€80-€150**



**207. In the Style of Charles Hunt - 20th / 21st Century**

"Boys Playing Cricket on a Lawn," O.O.C., 49cms x 60cms (19" x 24"). (1)

**€100-€200**



**208. 18th Century Irish School**

"Portrait of grey haired Gentleman with lace cravat and blue jacket," O.O.C., 74cms x 62cms (29" x 24 1/2"), in gilt frame. (1)

**€200-€300**



**209. Nicholas Drummond,  
British XX-XXI**

"Farmhouse by the Sea," O.O.C., signed lower right, unframed, 66cms x 76cms (25" x 30"). (1)

**€150-€180**



**210. A 19th Century French marble top Secretaire Abattant,** with cut brass flanked frieze drawer above a cut brass and inlaid drop front opening to reveal a sectioned interior with drawers and shelves, and four long conforming drawers below, all flanked to either side with reeded pilasters headed with brass Doric capitals on shaped plinth with bun feet, 140cms x 79cms (55" x 31"). (1)

**€800-€1200**



**211. A model of a Duck,** in a naturalistic base; together with a Woodcock on a naturalistic base. (2)

**€80-€120**



**212. An inlaid mahogany Display Cabinet,** with two astragal glazed doors on a base with two cupboard doors on bracket feet, 71cms x 45 1/2" (180cms x 116cms). (1)

**€250-€350**



**213. Two unusual modern metal Models of Cockerels. (2)**

**€60-€80**



**214. A large brass Group,** modelled as The Three Graces on an oval moulded base, 74cms (29") O.R.M. (1)

**€200-€300**





**215. A large quantity of Drinking Glasses, Decanters, coloured Glass and other assorted Glassware, as a lot, w.a.f.**

**€200-€300**



**216. An oak oblong Jardiniere, with original liner, cane work sides on barley twist uprights, united by turned stretcher. (1)**

**€60-€80**



**217. A pair of embossed brass cushion frame Wall Mirrors, each crested with a female mask, 22" x 13" (56cms x 33cms); and another similar without crest. (3)**

**€100-€200**



**218. Two marble top Bedside Stands, with shelf stretchers on reeded tapering legs. (2)**

**€120-€150**



**219. A small Art Deco copper Corridor Lantern, with cutglass cylindrical liner, 33cms (13"). (1)**

**€150-€200**



**220. An early 19th Century inlaid and crossbanded Sideboard, with shaped back above three frieze drawers on square tapering legs united by a shaped stretcher shelf, 67 1/2" (172cms) (adapted). (1)**

**€150-€250**



**221. An Aesthetic movement ebonised and gilt Overmantel, the arch cornice with central painted porcelain panel of a cherub above long shaped shelf with central landscape mirror, the base with a large bevelled shield shaped mirror flanked either side with shelf and mirror panels, 175cms x 175cms (69" x 69"). (1)**

**€250-€350**



**222. A pair of heavy Regency period cast brass 'dolphin' Candlesticks, 20cms (8") and another pair of heavy brass dragon Candlesticks. (4)**

**€80-€100**



**223. A late 19th Century French gilt Spelter Mantle Clock, with Serves style Celeste blue porcelain urn finial with two handles above a matching square painted porcelain dial with Roman numerals on a breakfront base (as is with losses) 46cms x 36cms (18" x 14"). (1)**  
**€80-€100**



**224. A set of 3 modern blue and white porcelain Planters, 11" (28cms). (3)**  
**€70-€120**



**225. After Godfrey Douglas Giles (1857-1941)**

"The Meath Hunt, (Whooloop Killeen Castle)," and "The Ward Hunt (The Fairyhouse River)," a pair of coloured Hunting Prints, 46cms x 72cms (18" x 28"), and one other "A View of the Four Courts," William G. Byrne, 38cms x 56cms (15" x 22"). (3)  
**€180-€250**



**226. Sheila Lysaght c. 1920**

"Two Mosul Kurdish Women by an arched door," watercolour, monogramed, 13 1/2" x 9 1/2" (34cms x 24cms), another with "Man Smoking Pipe," also signed with monogramed and dated '20, and a "Lake Scene," by same hand. (3)  
**€250-€300**



**227. A tall Chinese blue and white baluster shaped Vase and Cover, with all over floral pattern, the cover with a Foo Lion, 72cms (28") h. (1)**  
**€120-€150**



**228. A Victorian three tier cast iron Plant Stand, on out splayed paw feet; together with a circular cast iron Pot Stand with shaped feet; and an associated circular Terracotta Pot with thistle emblem. (3)**  
**€120-€160**



**229. After William Hamilton**

"Romeo & Juliet," a Bartolozzi coloured Engraving in ornate gilt frame with ribbon bow crest, 15 1/2" x 11" (39cms x 28cms) and another small oval Engraving "Leda and the Swan"; together with a Sketch of a Young Girl. As a lot, w.a.f. (3)

**€80-€150**



**230. A square brass Hall Lantern**, with four star cut bevelled glass panels, with urn finials, 16" x 9 1/2" (41cms x 24cms). (1)

**€150-€250**



**231. An antique walnut and parcel gilt Wall Mirror**, with shell crest in fret cut frame, 29" x 16" (74cms x 40cms). (1)

**€200-€300**



**232. A large circular copper Preserving Pan**, with two iron handles, 60cms (24"). (1)

**€100-€150**



**233. A Georgian period Irish Provincial drop-leaf Table**, with frieze drawer with brass handles and demi-lune flaps, on square feet, 122cms (48") long. (1)

**€140-€180**



**234. A Georgian period Irish heavy mahogany drop leaf Table**, with heavy D shaped flaps on pad feet, 120cms (47") long. (1)

**€180-€220**



**235. A late 19th Century / early 20th Century mahogany Library Chair**, by James Shoolbred (Jas) with button back above a solid deep saddle seat on front turned legs, stamped and numbered. (1)

**€250-€350**



**236. A Nelson period mahogany Corner Armchair**, with curved top rail and spiral reeded supports and legs. (1)

**€150-€220**



**237. Four Nicholas Mosse tulip design graduating Bowls,** together with a large and small Jug with similar pattern. (6)

**€120-€140**



**238. A pair of French style marble top Bedside Lockers,** with single frieze drawers and drop front door on reeded tapering legs, with brass mounts, each approx. 43cms wide x 83cms high (17" x 33"). (1)

**€200-€300**



**239. An Edwardian inlaid Secretaire Cheval Firescreen,** profusely inlaid in the Neo Classical style, with female portraits, military trophies, vases, scrolling foliage and cherubs, the pull down front with fitted interior and writing surface, all raised on shaped standards and legs, 42 1/2" x 25" (108cms x 63cms). (1)

**€400-€600**



**240. A 20th Century green ground glazed Chinese porcelain Plant Stand,** with reticulated frame on a hexagonal base, approx. 74cms (29") high. (1)

**€120-€140**



**241. An early Georgian period walnut and feather banded kneehole Desk,** the top probably associated above a wide frieze drawer above a recessed cupboard flanked with three box drawers to either side, and raised on bracket feet, 28" x 28" (71cms x 71cms). (1)

**€400-€600**



**242. A good three bay three storey Dolls House,** with numerous furniture, pictures, dolls, appliances, etc., 23"h x 16"w (58cms x 41cms). (1)

**€100-€200**



**243. A mahogany Canterbury,** in the William IV style, with three slatted sections and lower drawer on turned legs, 18" (46cms). (1)

**€100-€200**



**245. A four bay model of a Dolls House,** with arched windows, various dolls and doll house furniture, etc., 18" x 17" (46cms x 43cms). (1)

**€140-€220**



**247. A pair of 19th Century Staffordshire flat back Groups,** one modelled as a Woman reading while reclining on a chaise longue the other a gentleman each approx. 9" (23cms); together with a pair of small Staffordshire Spaniels, 7 1/2" (19cms); and two small porcelain items; together with a blue and white English chestnut Basket, a Staffordshire black and parcel gilt Figure of a recumbent lion 10" (25cms) and a black porcelain Cow Creamer, and a large porcelain Cup and Saucer. As a lot, w.a.f. (8)

**€100-€150**



**244. An 18th Century oak lift top Coffer,** the plain top over a carved frieze with three ornate panels, on block feet, approx. 112cms wide x 61cms high (44" x 24"). (1)

**€200-€300**



**246. An 18th Century style oak Side Table,** with rectangular moulded top, above a frieze drawer on turned legs, 25" (64cms). (1)

**€120-€150**



**248. A rare collection of 12 Chinese Entomology Insect Studies,** depicting moths, beetles, butterflies etc., with Chinese text, two studies in each, uniformly framed. (12)

**€400-€600**



**249. A 19th Century oval Needlework Print**, depicting the rescue of Moses; an 18th Century Bartolozzi coloured Print in circular gilt frame and a small 19th Century coloured Print of cherubs in circular ebonised frame. As a lot. (3)

**€120-€180**



**251. A 19th Century painted French Fauteuil**, with needlework padded back seat and arms on cabriole legs; together with a giltwood French Fauteuil with carved floral bouquet top, deep buttons padded back and upholstered seat on front cabriole legs. (2)

**€200-€300**



**253. A 19th Century inlaid and crossbanded mahogany Pembroke Table**, the two rectangular flaps with canted corners and flanking a frieze drawer on square tapering legs, 30" (76cms). (1)

**€180-€250**



**250. A 19th Century French Kingswood Games Table**, with removable and reversible top with inset checkers and leather top, above a shaped frieze with opposing drawers on sabre legs, 75cms wide x 72cms high (29 1/2" x 28 1/2"). (1)

**€300-€400**



**252. A fine Victorian birds eye maple Writing Table**, the top with a green tooled leather inset and a slide out panel to either side enclosing fitted interior for pens, pencils & ink bottles, above a frieze drawer on two leaf moulded and tuned supports on quadruple cabriole legs with scroll terminals, 100cms (39"). (1)

**€500-€700**



**254. A marble and brass elongated octagonal shaped dual Desk Companion**, with hinged dome lids with overall flame design. (1)

**€150-€180**



**255. A set of 5 armorial Dining Chairs**, the arched backs with crown finials either side over a leather padded back with central gilt crest and carved base frame depicting shamrocks, Tudor rose, thistle etc., with hide seats on front turned legs. (5)

**€250-€350**

**257. A gilt Wall Mirror**, with urn crest issuing floral swags over a reeded frame, 28" x 14" (71cms x 36cms). (1)

**€80-€120**

**259. A pair of Regency period mahogany Dining Chairs**, each with roped cross rail and on front sabre legs. (2)

**€80-€150**



**256. A 19th Century oval mahogany Breakfast Table**, the top with wide crossbanded border on a base with turned pillar supports above a quatreform platform base with inlaid outsplayed legs terminating on hairy paw brass castors, 183cms x 122cms (72" x 48"). (1)

**€250-€350**

**258. A small 18th Century walnut Dressing Table Mirror**, with swing frame and frieze drawer on bracket feet, 13" (33cms); with an 19th Century birds-eye maple ditto with three drawers, 14" (35cms); and two other Dressing Table Mirrors. (5)

**€220-€350**

**260. Three similar 18th or 19th Century oak Joiner Stools**, each with moulded seats above carved friezes on turned legs united by stretchers. (3)

**€300-€400**



**261. A George III period mahogany Chest**, with three long and two short drawers raised on bracket feet, 32 1/2" x 37" (82cms x 94cms). (1)

**€300-€500**



**263. A 16mm colour version Souvenir Film of the Coronation of Queen Elizabeth II**, by associated British - Pathe Ltd Film House, London, in original case. (1)

**€80-€150**



**265. A set of 4 modern Designer brown leather covered Armchairs**, by Rolf Benz, with labels. (4)

**€800-€1000**



**262. A George III period mahogany Chest**, with two long and two short drawers raised on bracket feet, 33" x 33" (84cms x 84cms). (1)

**€280-€350**



**264. A pair of French style ornate shield design ormolu Wall Mirrors**, decorated in the rococo taste with grotesque masks, cherub heads etc., each approx. 41cms (16"). (2)

**€100-€150**



**266. A small circular marble French style Occasional Table**, with brass gallery on four tapering fluted legs, 51cms x 45cms (20" x 17 1/2"). (1)

**€80-€90**



**267. Two similar circular marble top Occasional Tables**, with pierced brass gallery on reeded legs. (2)

**€150-€180**





**268. An Irish William IV period mahogany Cabinet**, attributed to Williams & Gibton, stamped A8457, the moulded top over panelled doors with ornate brass escutcheons, and half pillar with carved capitols, on bracket feet, approx. 132cms (52") wide x 96cms (38") high. (1)

**€400-€500**



**270. After Oliver Sheppard (1865-1941)**

"The Fallen Cu Chulainn," bronze mounted on square Connemara marble plinth, approx. 22cms (9"). (1)

**€250-€350**



**272. Brassware: A heavy brass moulded Fire Curb**, with floral motifs, a pierced brass Fire Guard with paw front feet, two pairs of And Irons and various Fire Tidy's and a selection of Door Handles and an inlaid wooden Jardiniere Stand, as is, w.a.f. (a lot)

**€200-€300**



**269. A large French Side Cupboard**, of serpentine form, with heavy moulded rouge and speckled marble top above four kingwood veneered doors enclosing various adjustable shelves, the front with ornate brass mounts and raised on short cabriole legs with brass sabots, 107cms x 203cms (42" x 80") together with a smaller matching two door ditto, en suite, 124cms (49")w. (2)

**€400-€500**



**271. Brass and Copperware: A tall two handled brass Fuel Bin**, with domed removable lid on paw feet, a helmet shaped Coat Scuttle, a brass and ebonised handle Bed Warmer, a Samovar, a bulbous brass Jug and a Bottle Opener. As a lot, w.a.f. (a lot)

**€120-€150**



**273. A Georgian style oak Hall Table**, the plain top above a frieze with three drawers and carved motifs, on block pillar legs, united by a H stretcher, 175cms length x 95cms width x 80cms high (69" x 37 1/2" x 31 1/2"). (1)

**€200-€300**



**274. A Victorian Apprentice mahogany circular Table**, on turned stem and quatrefoil base with bun feet, 20cms x 22cms (8" x 8 3/4"); together with a Apprentice Bureau Bookcase, the slope front opening to reveal pigeon holes and drawer and three long drawers below on cabriole legs, 36cms x 15cms (14" x 6") and a Apprentice Chest on Stand with an arrangement of eight drawers on cabriole legs. (3)  
**€180-€250**



**275. A modern Imari style porcelain and brass Table Lamp**, 17" (43cms). (1)  
**€50-€70**



**276. A set of 6 (5 + 1) Chippendale style walnut Dining Chairs**, each with tan hide seat and back and raised on front shell moulded cabriole legs with ball n' claw feet. (6)  
**€200-€300**



**277. A good set of 6 Victorian rosewood Dining Chairs**, each with moulded back, with leaf carved cross rail on baluster turned legs. (6)  
**€500-€700**



**278. A 19th Century mahogany plain top Pod Table**, the plain top on outplayed legs with hairy paw castors, 140cms x 122cms (55" x 48"). (1)  
**€300-€400**



**279. A fine Japanese Akasuke Ginbari Vase**, in burgundy enamel of lobed form Meiji period, 7 1/2" (19cms); together with a 20th Century porcelain and glazed Bowl with multiple monkeys climbing a mountain with blue seal character mark, on side, approx. 23cms (9") high. (2)  
**€200-€300**



**280. A pair of heavy William IV rosewood Side Chairs**, each with a shaped top rail and moulded cross rail, above a stuff over seat on turned legs. (2)

**€80-€150**



**282. A set of 6 (2 + 4) Provincial Chairs**, with shaped tops over spindle backs and cane work seats, above turned front rail and pad feet, united by multiple stretchers. (6)

**€200-€300**



**284. A 19th Century Irish mahogany Partners or Estate Desk**, in the Thomas Chippendale manner, the leather inset top (damaged) over a frieze with three opposing drawers with brass drop handles on square tapering legs, with brass castors, 206cms long x 124cms wide (81" x 49"). (1)

**€400-€600**



**281. A William IV Irish mahogany framed Cheval Mirror**, in the manner of William and Gibton, the arched central swing mirror supported by tapering columns with turned finials on scroll legs, united by conforming stretcher, 158cms high x 84cms wide (62" x 33"). (1)

**€200-€300**



**283. 19th Century Naïve Irish School**

*"View of Bantry Bay from Bantry House"*, oils on board, Seascape with boats, and mountains in the distance, approx. 50cms x 74cms (20" x 29"), inscribed center bottom, in gilt tipped oak frame. (1)

**€150-€200**



**285. A Victorian walnut Open Easy Armchair**, with button back on front turned legs, covered with cream fabric. (1)

**€100-€200**



**286. A late William IV mahogany Chaise Longue**, the shaped back with a leaf scroll and a scroll shaped head and foot end, raised on reeded bun legs, covered in attractive beige fabric, 80" (202cms). (1)

**€300-€500**



**288. Three graduating variant design papier mache Trays**, with gilt decoration and inlay. (3)

**€100-€150**



**289. A collection of various framed Quotations**, relating to George Bernard Shaw, and a framed Reproduction Photograph of Elvis Presley and Muhammad Ali, as a lot, w.a.f. (8)

**€50-€70**



**287. A late 19th Century Armchair Chaise Longue**, covered in loose trellis green fabric, 80" (201cms). (1)

**€150-€200**



**290. A pair of large French style giltwood Open Armchairs**, the padded shield back with carved cartouche with matching padded seat and arms on front heavy scrolled cabriole legs. (2)

**€180-€220**



**291. A brass bound pine lift top Chest**, of small proportions with cast iron carrying handles, 76cms (30") long. (1)

**€80-€100**



**292. A 19th Century Irish mahogany fold-over Tea Table**, probably Cork, the plain top over a frieze with ornate ebony string inlay on turned legs, approx. 92cms (36") wide. (1)

**€180-€220**



**293. A William IV mahogany fold-over Tea Table**, on a shaped pillar terminating on a quatreform base with bun feet, approx. 98cms (38 1/2"). (1)

€180-€220



**294. A painted French Fauteuil**, the shaped back with carved floral central decoration with a faux tiger skin covered back with hide covered arms and seat on conforming front cabriole legs; together with a painted Open Armchair with scroll arms and padded seat on front sabre legs. (2)

€200-€300



**295. A 19th Century French Parlour Suite**, comprising of a three seater and two Side Chairs, covered in lime green fabric on front reeded legs. (3)

€400-€600



**296. An Edwardian oak kneehole Desk**, in the manner of Jas. Shoolbred, the gilt tooled leather inset top above a frieze with three drawers and pedestals with three graduating drawers, all with pierced drop brass handles, 140cms wide x 74cms deep (55" x 29"). (1)

€300-€400



**297. A heavy ormolu and marble cherub decorated urn shaped Table Lamp**; together with a pair of modern Empire style fruit design Table Lamps with black shades. (3)

€200-€300



**298. A silver plate mounted and porcelain Jug**, with grotesque mask lip; together with a collection of modern cased Hunting or Fish Knives, a Ladies Helvetia Wrist Watch with presentation pouch and a Gentlemans Pringle Wrist Watch, as a lot. (a lot)

€80-€100



**299. A late 19th Century Royal Worcester two handled Portrait Vase**, with a young Lady with blue shawl and white dress holding red flowers on a quadruple pod, 17 1/2" (44cms) (with restoration), and a smaller similar Noritake Vase decorated with swans in a river landscape, 10" (26cms). (2)

€120-€140



**300. An early oak Table Cupboard**, the front door with a cruciform panel enclosing an arrangement of 8 drawers, 12" x 13" (30cms x 33cms); and two large early oak Bible Boxes, both as is. (3)  
**€200-€300**



**302. A Georgian style leather top mahogany Centre Table**, on cabriole legs, terminating on ball n' claw feet, approx. 153cms x 76cms x 84cms (60" x 30" x 33"). (1)  
**€200-€300**



**304. A modern traditional wooden Rocking Horse**, with glass eyes, by Goodwillie, 64" (163cms). (1)  
**€400-€600**



**301. An old metal and wood bound Steamer Trunk**, the fitted interior with various compartments, containing a quantity of masonic regalia and costume and pouch, the pouch inscribed Clowes & Woodward of Dame Street, Dublin Masonic Jewelers, with a lift out tray enclosing various ceremonial clothes, the trunk with a name plate inscribed W.J.H. Tyrrell, formerly of Ballindoolin House near Eden Derry, 81cms (32"). (1)  
**€200-€300**



**303. Two Middle Eastern painted Footstools**, with knitted centers and painted legs, together with a Middle Eastern octagonal top lacquered Occasional Table, with decorated panels in the typical taste, as a lot. (3)  
**€100-€150**



**305. A very attractive gilt triptych Screen**, in the Adams style, the arched center section crested with an urn issuing leaf swags and rams masks above a bevelled glass panel and a needlework picture below with waddling duck flanked to either side with similar panels, 183cms x 190cms (72" x 75"). (1)  
**€400-€600**



**306. A pair of French walnut Armchairs**, each with cartouche shaped back covered in cream hidette with conforming arm panels and seat raised on four moulded cabriole legs, O.R.M. (2)

**€300-€400**



**308. A rare coin operated upright 12" disc Music Box**, c. 1890, polyphon in grained rosewood case with album of 12 spare musical metal discs, the arched and glazed door flanked with fluted pilasters to either side above a frieze drawer, 66cms x 50cms (26" x 19 1/2"). (1)

**€500-€700**



**310. A 19th Century oak Welsh Dresser Base**, the plain top over two heavy frieze drawers with brass handles, above a shaped frieze with scroll legs, approx. 155cms x 53cms x 81cms (61" x 21" x 32"). (1)

**€200-€300**



**307. A pair of Gothic style brass Altar Candlesticks**, (converted as Table Lamps) on spiral fluted stems, 69cms (27") including shades. (2)

**€100-€150**



**309. A pair of attractive rococo style Fire Dogs**, each with urn finial, a serpentine shaped steel and brass mounted grate front, and various brass Fire Implements. (9)

**€80-€120**



**311. A 19th Century Biedermeier Tray**, with lift top Ladies Writing Desk with two frieze drawers on a base with oval platform shelf and splayed legs. (1)

**€180-€220**



**312. A very attractive cast brass three part French Fender**, the two chenets each with a large and a small urn with hanging leaf swags above a small balustrade with hanging swags, above lion masks each united by a serpentine balustrade, approx. 137cms (54"). (1)

**€300-€400**



**314. An unusual small Coffier Chest**, of rectangular form with hinged cover and base drawer on bracket plinth, 22" (56cms), and a small rectangular oak Stool, 12" (30cms). (2)

**€150-€200**



**316. A fine antique oak draw-leaf plank top Dining / Refectory Table**, with shaped frieze on four baluster turned supports and square block feet, united by railed stretchers, 76" x 24 1/2" (193cms x 62cms) extended. (!)

**€500-€800**



**317. Coloured Engravings:** A set of 12 coloured Engravings of modern London, The history and present state of the British Metropolis, published by Richard Phillips, London 1804, each approx. 15cms x 11cms (6" x 4 1/2"), in matching black and gilt glass hogarth frames. (12)

**€200-€300**



**313. A late William IV mahogany Chaise Longue**, with shaped button back and scroll end, carved rosette, covered in gold fabric on half reeded and leaf carved legs. (1)

**€300-€500**



**315. A 19th Century Oriental circular hardwood Occasional Table**, with decorative cloisonné panel inset above a pierced decorated frieze, approx. 41cms diameter x 66cms high (16" x 26"). (1)

**€150-€200**





**318. C. Harrison XX-XXI**

A pair of Equestrian Scenes with Race Horses and Jockeys, O.O.B., each approx. 20cms x 25cms (8" x 10"), in matching gilt frames, both signed lower left. (2)

**€150-€200**



**319. An 18th Century oak Side Table**, with rectangular moulded top above a frieze drawer with pear shaped brass drop handles on turned legs, with railed stretchers, 28"h x 31"w (71cms x 79cms). (1)

**€200-€300**



**320. A Victorian mahogany button back Armchair**, covered in green velvet on front cabriole legs. (1)

**€200-€300**



**321. A Victorian mahogany Hall Chair**, with triple scroll back and centre cartouche above a solid seat on turned front legs. (1)

**€80-€100**



**322. An 1821 pattern British Light Cavalry Troopers Sword**, lacking guard, as is, and two other modern Swords. (3)

**€70-€120**



**323. Militaria: A rare 19th Century Burmese Ceremonial Dagger**, the hilt depicting a carved bone model of a standing dragon, the steel pointed blade housed in wooden scabbard with steel straps, approx. 21cms (8 1/4") long. (1)

**€100-€150**



**324. Militaria: A Rare World War II Army Issue 'U.S. Marines' Dagger**, with pointed blade, inscribed, in original leather scabbard embossed mark 'U.S. M6 - Barwood - 1943,' approx. 18cms (7 1/2") long. Scarce. (1)

**€250-€300**



**325. Militaria: Ethnographical - A 19th Century Persian 'Jambiya'** the double sided and curved blade housed in embossed leather scabbard, with ebonised grip and ornate steel medallion mounts with Arabic text, approx. 23cms (9") long; together with an early African Dagger with steel straight blade housed in decorative scabbard and matching grip; also an African Hunting Knife with shaped blade housed in wooden scabbard, as a lot, w.a.f. (3)

**€100-€150**



**327. An 18th Century oak drop-leaf Occasional Table**, of low proportions with demi lune flaps on a base with gate leg action with turned legs, approx. 91cms (36"). (1)

**€150-€200**



**329. An Edwardian mahogany Open Armchair**, with pierced splat, together with a Regency period mahogany rail back Side Chair. (2)

**€60-€80**



**326. Militaria: A Victorian 'Bushman' Hunting or Fighting Knife**, marked warranted cast steel, Sheffield, approx. 13cms (5") long, the wooden grip with brass insets, in original scabbard. (1)

**€60-€80**



**328. A Georgian Irish Provincial mahogany drop-leaf Table**, the plain top with rectangular flaps over a frieze drawer with plain brass drop handles, on reeded square legs with brass castors, approx. 67cms long x 71cms high (26 1/2" x 28"). (1)

**€300-€400**



**330. A late 19th Century Tin Document Box**, with two handles with the name - Miss E.C. Barnes, Clatford, 19" (48cms). (1)

**€70-€90**



**331. A pair of attractive Georgian style demi-lune Tables**, each with painted tops in the Adams style, with floral bouquets and love knots, each frieze with carved rosettes on reeded tapering legs, approx. 142cms wide x 58.5cms deep x 86cms high (56" x 23" x 34"). (2)

**€700-€1000**



**333. A small George IV period mahogany Pembroke Table**, with two D shaped flaps flanking two small frieze drawers on ring turned tapering legs, 29 1/4" x 18" (74cms x 46cms). (1)

**€300-€400**



**335. A pair of unusual oak framed bobbin turned Corner Chairs**, with cane work seats. (2)

**€120-€140**



**332. A pair of 19th Century giltwood Side Chairs**, with spindle backs over cane work seats, on front turned splayed legs united by a front stretcher. (2)

**€70-€100**



**334. A Queen Anne style mahogany tray top Side Table**, with four frieze drawers on four cabriole legs, 28" x 20" (71cms x 51cms). (1)

**€200-€300**



**336. A 19th Century mahogany Sutherland Table**, with demi-lune flaps above a single frieze drawer on square tapering legs with brass castors, approx. 66cms (26"). (1)

**€150-€200**



**337. A Victorian mahogany rectangular top Side Table**, on turned tapering legs with castors, approx. 59cms (23"). (1)

**€100-€150**



**339. A pair of gilt painted assimilated bamboo Side Chairs**, with cream fabric covered seats. (2)

**€80-€100**



**341. A pair of late 19th Century gilt Banquet Chairs**, each with a four arch back with turned rails, together with another similar five branch ditto. (3)

**€150-€200**



**338. A pair of French style marble top bombe shaped marquetry Bedside Lockers**, with two frieze drawers on sabre legs and brass sabots, approx. 49cms wide x 74cms high x 31cms deep (19 1/2" x 29" x 12 1/4"). (2)

**€300-€400**



**340. A 20th Century carved hardwood camphorwood Chest**, the top front and side panels decorated in relief, depicting typical landscape scenes, figures etc., with brass hinge locks, approx. 102cms x 72cms (40" x 28 1/2"). (1)

**€250-€350**



**342. A Regency period mahogany Teapoy**, the casket shaped top opening to reveal a fitted interior with three caddies and a metal mixing compartment, raised on a ring turned stem with quadruple pod, 33" (84cms)h. (1)

**€400-€600**



**343. A small bow fronted mahogany Chest**, with three drawers on splayed bracket feet, 30"h x 24"w (76cms x 61cms). (1)  
**€150-€200**



**345. A pair of 19th Century pine Low Chairs**, each with spindle back, above a cane work oval seat on front turned legs united by front turned stretcher. (2)  
**€100-€150**



**347. A George III style mahogany drop-leaf Dining Table**, with two demi-lune drop leaves on square square legs, 45" (114cms). (1)  
**€150-€180**



**344. A Georgian mahogany lift top Side Table**, on turned tapering legs with brass castors, approx. 51cms (20") wide; together with a 19th Century mahogany tray top Table with pierced brass gallery over frieze with ornate ormolu border, on turned tapering legs and castors, approx. 66cms (26") wide. (2)  
**€150-€200**



**346. A Neo-Classical style bronze Sellette or Jardiniere Stand**, with bronze medallion to circular white marble top, the supporting frame with mythical birds, classical mask and chain swags, the center with a standing classical woman, on a tripod base with paw feet, 32 1/2" h x 18" w (83cms x 46cms). (1)  
**€300-€500**



**348. A hide covered Tub Chair**, with brass studs, on front square tapering feet. (1)  
**€120-€140**



**349. A modern leather Trunk**, with assimilated blue and white design with brass hinge locks. (1)  
**€100-€150**



**350. A 19th Century heavy mahogany Yacht Table**, of large proportions, on turned pillar support with gate leg action, 92cms long (36"), on castors. (1)

**€150-€200**



**353. An Edwardian Gentlemans Washstand**, with adjustable circular mirror, marble top with brass rails on splayed legs, together with a Victorian mahogany framed Bidet on turned legs and a mahogany Towel Rail. (3)

**€120-€140**



**355. A 19th Century Irish Provincial mahogany Estate made drop leaf Table**, with rectangular flaps on gate leg action with block feet, approx. 140cms (55") long, as is. (1)

**€200-€300**



**351. A two tier modern oval metal Etagere**, with glass shelves, 25" x 22" (63cms x 56cms); and a brass triptych spark Guard. (2)

**€150-€180**



**354. An 1860's miniature cast iron Sewing Machine**, probably James G. Weir, 10" (25cms), another smaller similar ditto, another larger cast iron hand Sewing Machine "The Anderson" c. 1870, probably by Jones Sewing Machine Company, Manchester, 16" (41cms), together with a large cased model "The Elm Park No. 1, and made by the Bradbury Family, distributed by Chas. Todd, Fulham Road, Belgravia, London", 19" (48cms). (4)

**€300-€500**



**356. An Aesthetic movement ebonised Settee**, with padded button top raised on a balustrade support above a padded seat on turned legs, 54" (137cms). (1)

**€200-€300**



**352. A large two handled engraved oval shaped Serving Tray**, and a smaller similar ditto. (2)

**€30-€40**



**357. A good William IV period mahogany Dining Room or Library Armchair**, with shaped top rail and panelled cross rail above a drop in seat flanked to either side with reeded scroll arm rests, on turned and reeded front legs and another similar Armchair. (2)  
**€200-€300**



**359. A good set of eight - 18th Century Italian light blue painted and parcel gilt Side Chairs**, each cartouche moulded back with a flower head crest around a cane panel above a cane seat on turned tapering legs. (8)  
**€800-€1200**



**361. A pair of modern bronzed metal cluster column Table Lamps**, with cream shades, 22" (56cms); and another pair of grained wooden metal Table Lamps, (modern). (4)  
**€140-€170**



**358. A 19th Century Chippendale style mahogany framed Side Chair**, with shaped splat back above drop in seat covered in blue fabric, on front carved ball n' claw feet. (1)  
**€120-€140**



**360. A set of three heavy Masons Ironstone Meat Platters**, 14 1/2" (37cms), a blue and white ditto, a large pink and white ground Masons ditto 19" (48cms), a blue and white Willow pattern Platter and four others. (9)  
**€100-€150**



**362. A 19th Century mahogany four tier Wall Bracket**, with bobbin turned pillar supports, approx. 81cms wide x 99cms high (32" x 39"). (1)  
**€150-€200**



**363. A 19th Century French D end oak Refectory Table**, of narrow proportions supported by turned double pillars, each end on shaped base united by plank stretcher, approx. 249cms long x 76cms wide x 75cms high (98" x 30" x 29"). (1)

**€350-€450**



**364. J. Cody - English School**

"Hunting Scene with Horse and Jockey in foreground," O.O.B., 19cms x 24cms (7 1/2" x 9 1/2"), signed lower left in ornate gilt frame. (1)

**€100-€150**



**365. A pair of late 18th Century carved walnut barley twist Armchairs**, in Charles II style, each with padded seat and back and carved lion head arm terminals. (2)

**€200-€300**



**366. 19th Century English School**

"Extensive Coastal Scene with Encampment on Beach and Mountains in distance," O.O.C., 36cms x 46cms (14" x 18"). (1)

**€150-€200**



**367. A set of 3 Victorian mahogany Dining Chairs**, each with cartouche shaped padded back and padded seat on front cabriole legs and another Victorian Chair with matching fabric. (4)

**€300-€500**



**368. A heavy cast iron Railway Crossing Notice**, "Any Person Leaving this Gate Open is Liable to a Penalty of Forty Shillings" 27cms square (10 1/2"). (1)

**€80-€150**





**369. A fine Longchamp hold-all Hand Bag.** (1)

**€80-€100**



**370. Four similar brass Fenders,** each with attractive balustrade on moulded base, approx. 140cms (55"). (4)

**€150-€250**



**371. A Victorian mahogany framed Footstool,** with needlework upholstered seat over a shaped frieze on carved cabriole legs. (1)

**€150-€200**



**372. A 19th Century French kingswood fold-over Card Table,** with geometric design inlaid top with wide crossbanded border, opening to reveal leather inset above a conforming frieze with ornate ormolu mounts on cabriole legs, terminating in brass sabots, approx. 85cms wide x 42cms deep x 79cms high (33 1/2" x 16 1/2" x 31"). (1)

**€200-€300**



**373. An 18th Century Irish mahogany drop-leaf Table,** of small proportions with demi-lune flaps and gate leg action, on shaped pad feet, approx. 110cms (43") long. (1)

**€200-€300**



**374. 19th Century Irish School**

"Portrait of a grey haired Gentleman, with scarf and black jacket," O.O.C., approx. 61cms x 51cms (24" x 20"). (1)

**€120-€140**



**375. A Charles X period French marquetry Revolving Bookcase,** with ornate brass mounts, the circular top inlaid with musical trophies and scrolling foliage above two revolving shelves with brass balustrades and a triform base. (1)

**€300-€400**



**376. A late Regency period mahogany three tier Canterbury Whatnot**, of square form with turned dividers and two lower drawers on turned legs, 39" x 18" (99cms x 42cms). (1)

**€250-€350**



**378. An attractive lift top carved framed Curio Cabinet**, on conforming reeded tapering legs, approx. 61cms wide x 76cms high (24" x 30"). (1)

**€150-€200**



**380. A 19th Century French giltwood Bergere type Throne Chair**, the center back with floral trophy issuing reeded pillars and scroll arms with rosette mounts, all with cane work sides and back above padded seat on front turned tapering legs. (1)

**€200-€300**



**377. A good pair of early 20th Century inlaid satinwood Armchairs**, each with a high padded back, padded arm panels and seat on front inlaid turned and tapering legs. (2)

**€300-€400**



**379. 20th Century Irish School**

"River Scene with Bridge and Mill Houses," pencil sketch, 36cms x 54cms (14" x 21") unsigned. Dawson Gallery label on reverse, cloth mount, black frame. (1)

**€100-€150**



**381. A Regency period mahogany square top fold-out Card Table**, the top with satinwood string inlay, above single frieze drawer with ornate circular brass handles, above an inlaid herringbone design, on square tapering legs, with brass castors. (1)

**€300-€400**



**382. A walnut Revolving Bookcase**, with square top and slatted sides, 33 1/2" (85cms). (1)  
**€120-€160**



**385. A silver Photograph Frame**, 6 1/2" (16cms), a large silver plated magnum Wine Coaster or Cigarette Case, and an oblong Indian brass two handled Tray, 29" (73cms). (4)  
**€60-€90**



**387. Waterford Shipping Interest:**  
**A set of 3 original watercolour Studies**, "The Clyde Shipping Company, Ships for Services to Liverpool to Waterford, including the S.S. Rockabill, S.S. Great Western and the S.S. Port Lairge," each approx. 16cms x 16cm (6 1/2" x 6 1/2"); together with an Advertisement Poster. As a lot. (4)  
**€200-€300**



**383. An oak 19th Century gate leg Table**, with demi-lune flaps on barley twist supports, approx. 94cms (37") long. (1)  
**€120-€150**



**386. A pair of painted and parcel gilt French Side Chairs**, each with a padded and ribbon moulded cartouche shaped back and padded seat, on turned and reeded front legs, together with a matching Armchair. (3)  
**€300-€400**



**388. A pair of brass mounted mahogany fold-over Tea Tables**, late 19th Century, each with a reeded top with rounded corners on baluster stem and quadruple pod with brass castors, (as is). (2)  
**€400-€600**



**384. A collection of carnival Glass**, comprising of jugs, bowls, shades. As a lot, w.a.f.  
**€100-€150**



**389. An Edwardian brass Oil Lamp**, with green coloured etched glass shade above a moulded dome brass pillar and circular base, with spare milk glass shade and a walnut cased wall clock, with circular enamel dial. (2)

**€150-€200**



**391. A collection of Drinking Glasses**, comprising whisky, wine and sherry glasses; a silver plated top Claret Jug; a Syphon Decanter and some porcelain Plates and a Legume Dish; a Chinese Carving and a carved wooden Saint, as a lot, w.a.f.

**€100-€150**



**393. A very good quality inlaid and crossbanded walnut Coffee Table**, the rectangular top with projecting rounded corners above two frieze drawers on four reeded tapering legs united by a stretcher shelf, 102cms x 50cms (40" x 19 1/2"). (1)

**€400-€600**



**390. An attractive circular shaped inlaid and marquetry Centre Table**, with brass border above a frieze with ormolu mounts on cabriole legs united by shaped stretcher, with pierced brass gallery and brass sabots, 74cms high (29"). (1)

**€180-€220**



**392. A circular Chinese cloisonné Plate**, with birds and flowers, 12" (30cms); together with a pair of miniature cloisonné Vases, 4 1/2" (11cms); a pair of Chinese octagonal enamel Dishes, and an Indian bronze and enamel Dish; together with a large Chinese metal Dish with phoenix and other birds in relief amongst foliage and dragon marks to base, 15 1/2" (40cms). (7)

**€70-€120**



**394. An attractive circular marble top two tier Centre Table**, with moulded brass rim above an inlaid frieze with drawer on scroll legs, with ornate ormolu mounts united by a conforming shelf stretcher with pierced brass gallery, 82cms (32")h. (1)

**€200-€300**



**395. A leather covered deep button design, horse shoe shaped, Swivel Office Chair. (1)**  
**€120-€140**



**398. A George IV period mahogany Pembroke Table, with D shaped flaps, flanking a frieze drawer on four ring turned tapering legs, 37" (94cms) w. (1)**  
**€350-€500**



**400. A Victorian giltwood Console Table, the moulded and shaped marble top on a base with carved cabriole legs; together with associated arched upright Pier Mirror, approx. 117cms wide x 186cms (table); 73cms x 32cms (mirror). (2)**  
**€500-€700**



**396. A fine pair of carved wooden Planters or Plinths, in the George II style, the panels with carved rosettes on rectangular plinth carved with scrolling foliage, 28" x 42" (71cms x 107cms). (2)**  
**€400-€600**



**399. A 19th Century Chinese profusely carved root wood Display, the overall dragon shape with figures and birds in relief in a typical Oriental setting, on incorporated base, approx. 102cms long x 28cms high (40" x 11"). (1)**  
**€350-€400**



**401. A bronzed plaster Bust of young Lady, signed C.B. 41cms (16") and another of a young Man, on wooden block. (2)**  
**€80-€120**



**397. A pair of attractive Victorian Side Chairs, with single shaped latt back hide covered seats, on front turned legs. (2)**  
**€80-€120**



**402. An attractive 19th Century French figural Mantle Clock**, the top surmounted with elegant young lady resting, inset with circular enamel dial with Roman numerals, on a base embellished with floral and leaf decoration, approx. 46cms (18") high; An attractive 19th Century French ormolu figural Mantle Clock, the top with male resting against a rock with book in hand, over a circular dial with Roman numerals, the base decorated with shells and grotesque masks, approx. 43cms (17") high. (2)

**€200-€240**



**403. An attractive gilt pier Mirror**, 19th Century, with inverted breakfront pediment above a relief moulded frieze with scrolling foliage and central rosette, the pilaster heads crested with classical female figures on triple collar pilasters, 105cms x 76cms (41" x 30"). (1)

**€300-€500**



**404. A good early Victorian rosewood Secretaire Chest**, the moulded top above an arrangement of six graduating drawers including a double drop down drawer with writing surface, drawers and pigeon holes, flanked with two lappet headed pilasters, including a hinged locking pilaster, on plinth base, 50" x 23" (127cms x 58cms). (1)

**€500-€800**



**405. An attractive pair of 19th Century Irish mahogany shield back Hall Chairs**, in the manner of Gillingtons, on front square tapering legs, united by H stretchers. (2)

**€180-€220**



**406. A 19th Century style carved Side Table**, in the manner of William Kent, the moulded and shaped plain top over a heavily carved frieze with central carved mask issuing scrolls and floral design, on a trestle background on heavy carved scroll legs united by X stretcher, terminating on hoof feet, approx. 132cms long x 70cms deep x 91cms high (52" x 28" x 36"). (1)

**€600-€800**



**407. A large and attractive 19th Century marble and ormolu mounted Mantel Clock**, of cruciform with urn finials, surmounted above resting cherubs and floral garlands, the brass dial with enamel Roman numerals inside original glass dome on ebony base, approx. 61cms high x 46cms wide (24" x 18"). (1)

**€400-€600**



**408. A 20th Century Chinese yellow ground dragon Wall Hanging or Carpet**, with multi coloured wavy border, framing a central dragon with five claws and smaller dragons in each corner, approx. 183cms long x 122cms wide (72" x 48"). (1)  
**€200-€300**



**409. An Irish heavy carved and pierced Victorian oak Hall Chair**, in the manner of Strathan. (1)  
**€60-€80**



**410. A fine early Chinese Imperial yellow porcelain Dish**, with raised enamel features depicting five dragons with four and five claws, around flowers and sea waves, six caricature raised mark to base, 44cms x 8cms (17 1/2" x 3 1/2"), piece to rim broken and restuck. (1)  
**€400-€600**



**411. A 20th Century Chinese design bamboo Throne type Patio Chair**. (1)  
**€120-€180**



**412. A fine large glazed white porcelain Bust of Jenny Lind (by repute) Head and Shoulders**, 53cms (21"). (1)

Johanna Maria 'Jenny' Lind was a famous Swedish Opera Singer, often called the 'Swedish Nightingale,' highly regarded in the 19th Century, she performed in Soprano in opera in Sweden and across Europe and made a concert tour in the United States beginning in 1850.

**€200-€300**



**413. An assimilated marble pillar Plinth**, with circular top and square base, approx. 120cms high (47"). (1)  
**€120-€180**



**414. A 5 piece ebonised Italian designer Dining Set**, by Molteni & Co., Italy, comprising four open armchairs and a circular glass top 'Arc' table, 51" (140cms) d. (5)  
**€1500-€2000**



**416. A 19th Century oak cased Grandfather Clock**, the hood with ornate brass finials housing a painted arched dial with Roman numerals by Taylor of Framlingham, with plain pillars either side above a trunk, with arched panel door on box base with bracket feet, approx. 221cms (87") high. (1)  
**€400-€500**



**418. An Irish Provincial mahogany cased Grandfather Clock**, the hood with arch top and sunburst satinwood inlay, over Corinthian columns with glazed door housing a painted dial with Roman numerals, signed 'Wallace, Limerick,' the frame with inlaid shaped panel door on box base with bracket feet, approx. 232cms (91") high. (1)  
**€300-€400**



**415. An attractive late 18th / early 19th Century French giltwood Centre Table**, with moulded mottled grey and pink serpentine marble top, the frieze carved with central scallop shells, scrolling foliage and trellis panels, upon cabriole legs headed by acanthus clasps and reaching to scallop feet, approx. 120cms wide x 76cms deep (47" x 30"). (1)  
**€1000-€1500**



**417. A French style kingswood bombe shaped Commode**, the moulded marble top over three long drawers with ornate ormolu mounts and handles on cabriole brass sabots, approx. 102cms wide x 91cms high (40" x 36"). (1)  
**€300-€400**



**419. A fine quality Louis XVI style kingswood Bureau**, the top with pierced gallery rail above a slope front, opening to reveal a fitted interior with compartment, the overall decorated with geometric pattern and with ormolu mounts on cabriole legs, approx. 70cms wide x 91cms high (27 1/2" x 36"). (1)  
**€250-€350**





**420. A large 19th Century Scottish mahogany cased Grandfather Clock**, the hood with breakneck pediment over brass and silver dial with arabesque and roman numerals and painted moon phase, flanked by turned pillar, above a trunk with 'love heart' panelled door, on a box base with bracket feet, approx. 239cms high x 66cms wide (94" x 26"). (1)

**€300-€400**



**421. William Spell, 19th Century English School**

"Portrait of a Gentleman seated in black suit, holding a silver topped cane," O.O.C., with plaque identifying the sitter as "Mother Brown," approx. 76cms x 61cms (30" x 24") in contemporary gilt frame. (1)

**€400-€600**



**422. James Butler Brennan, RHA (1825-1889)**

"Thomas Marpole," O.O.C., Portrait of a bearded Gentleman, arms folded, with building interior in background, signed lower right, approx. 92cms x 70cms (36" x 27 1/2") later gilt frame. (1)

**€400-€600**



**423. In the Manner of Godfrey Kneller (1646-1723)**

Half-length "Portrait of a Nobleman wearing black Wig, white Necktie, and red Shawl," O.O.C., approx. 74cms x 64cms (29" x 25") in ornate gilt frame. (1)

**€300-€400**



**424. 19th Century Irish or British School**

"Old Testament Prophet, c. 1875-85," O.O.C., 88cms high x 77.5cms wide (34 1/2" x 26 1/2"). (1)

Bears fragmentary exhibition label verso,

*"Was . . . by . . . No. of ticket . . . Ormond - Stewart - President [Tu?]cker - Hon Sec"*

Against a dark background, with hands clasped and wearing Biblical robes, a bearded grey-haired man is depicted half-length, his right arm leaning on a rock or ledge. Although untitled, the painting is likely to be an imagined portrait of an Old Testament Prophet, probably an assigned task for a student at art school. The sitter, possibly a professional life model, is depicted looking upwards, with a grave expression. However, because of the painting's accomplished Realist style, the 'prophet' could well be equally at home in Dublin's inner city, as in the Sinai desert. Given its Irish provenance, the painting, which dates probably from around 1880, may be a diploma work for the Metropolitan School of Art, the Crawford School in Cork, or for the schools of the Royal Hibernian Academy. It is well-painted, and could be an early work by an artist such as Harry Scully, Henry Thaddeus Jones, Sarah Purser, or perhaps William Orpen himself.

A fragmentary label on the frame indicates that the painting was at one point included in a group exhibition; this was likely in Dublin, Cork or Belfast.

*Dr. Peter Murray, 2024*

**€500-€700**



**425. A 19th Century Hepplewhite marble top Canterbury**, with up right slots canework side and shelves on rope turned legs, approx. 58cms wide x 99cms (23" x 39"). (1)

**€100-€200**



**426. A late 19th Century French pink speckled onyx Portico Mantle Clock**, of serpentine form, the top surmounted with a Medici Lion in bronze with left front paw on a gilt sphere above a circular enamel dial with Arabic numerals, supported by four columns on a conforming base, the movement by H.B. Paris, 41cms x 26cms (16" x 10"). (1)

**€150-€250**



**427. An attractive pair of Continental porcelain two handled Vases**, each ribbed body decorated with fruit, with scroll handles on square stem base, 23cms (9"). (2)

**€80-€120**



**428. A brass Milk Churn**, with two handles, inscribed 'Guaranteed Pure Milk, Skidmore & Son, Makers, Bow,' O.R.M., 41cms (16"); together with a chinoiserie lacquered cylindrical metal wastepaper Bin with two handles, 41cms (16"). (2)

**€80-€100**



**429. A very unusual relief moulded Capi-di-monte Coffee Service**, with classical figures in relief in parcel gilt and monochrome comprising a coffee pot with rams mask handle, a matching sugar and cream, 11 coffee cups, and 10 saucers. (24)

**€100-€150**



**430. A late 18th Century Caughley blue and white Dessert Service**, Salopian ware, comprising 11 - 9" (23cms) Plates, a pair of Sauce Tureens and covers, each with two shell handles, a pair of shell shaped Serving Dishes, and a pair of square lobed Serving Dishes. (17)

**€350-€550**



**431. A Georgian style mahogany Side or Serving Table**, with a wide frieze on square tapering reeded legs, 133cms (52"); together with a pair of oak Side or Hall Chairs, each with solid seat and panelled back. (3)

**€100-€150**



**433. A 19th Century Oriental leather embossed four-fold Draught Screen**, decorated with leaves and birds of paradise, approx. 183cms high x 240cms wide (72" x 94 1/2"); together with a later four-fold leather embossed and cloth draught Screen, approx. 181cms x 224cms (71" x 88") as is, w.a.f. (1)

**€180-€220**



**435. A 19th Century mahogany Corner Washstand**, of low proportions, with open slot top over plain shelf with single frieze drawer on splayed legs, united by shape shelf stretcher. (1)

**€100-€150**



**432. A mahogany framed three-fold Draught Screen**, with six upholstered leaf decorated panels, approx. 163cms high x 203cms wide (64" x 80"). (1)

**€150-€200**



**434. A George III period inlaid and crossbanded mahogany Corner Washstand**, three tiers with gallery and a bow front, the center shelf with two mock and one frieze drawer, on splayed legs united by a shaped stretcher shelf, 43" x 26" (110cms x 66cms). (1)

**€150-€250**



**436. A fine quality 19th Century extendable Fire Curb**, with ornate urn ends. (1)

**€180-€220**



**437. A 19th Century rosewood Wheel Barometer**, with silver main dial, with name John Bonham of Collunton, as is, approx. 112cms (44") high. (1)

**€80-€100**



**439. A 19th Century inverted breakfront Display Cabinet**, the recessed mirror back central panel with swan neck pediment above single frieze drawer and press flanked either side by astragal glazed doors with attractive inlay, on square tapering legs united by shaped shelf stretcher, approx. 206cms high x 132cms wide (81" x 52"). (1)

**€250-€300**



**441. A 19th Century mahogany two door Wardrobe**, the shaped cornice above two panel doors with moulded arch motifs on a plinth base, approx. 211cms high x 142cms wide (83" x 56"). (1)

**€150-€200**



**438. M.M. Jacobi, British (1839 - ?)**

"Old Mill at Llangollan, North Wales," and "Waterfall Evening in the Valleys with Ben Nevis in background," O.O.C., each approx. 40cms x 30cms (16" x 12"), both signed lower left, inscribed on reverse, in matching gilt frames. (2)

**€200-€300**



**440. An Edwardian oval mahogany inlaid Table**, on cabriole legs united by shaped stretcher on castors; together with a 19th Century mahogany circular top tripod Table. (2)

**€100-€150**



**442. A good pair of Regency style Eglomise gilt and painted Pier Mirrors**, the reeded pilasters headed with lion masks united by a reeded top rail, the upper frieze panel painted with two Fe-Lions flanking an urn above a tall mirror panel and two lion masks below terminating in lion paw feet, (one lacking its Eglomise panel), as is, w.a.f. (2)

**€500-€700**



**443. A late 19th Century gilt brass and onyx Boudoir Mantle Clock**, the movement by Japy Freres, the circular onyx dial with brass Roman numerals, the arched top surmounted by a two handled urn on rectangular leaf cast base on bun feet, on a separate giltwood base, 35cms x 17.5cms (13 1/2" x 7"). (1)

€180-€250



**444. A large bulbous Oriental style yellow ground porcelain Vase and cover**, the domed lid with brass Dog of Foo surmounted on a pierced shaped ormolu base, some damage, 74cms high (292"). (1)

€120-€140



**445. An Irish Georgian period Provincial mahogany Side Table**, the plain top over single frieze drawer with square legs, united by H stretcher, 76cms (30") high. (1)

€120-€180



**446. Two ornate brass Fenders**, 60" (153cms) - the larger. (2)

€150-€220



**447. A pierced brass Coal Scuttle**, with domed cover with urn finial and two lion mask and ring handles on paw feet, 17" (43cms); together with a four piece brass Fire Tidy with shovel, brush and tongs, with tubular stand. (2)

€80-€120



**448. A large Georgian period Irish Provincial Bookcase on Chest**, the inlaid moulded cornice above two astragal glazed doors on a base with two short and four graduating drawers with oval shaped brass handles, on bracket feet, approx. 260cms high x 103cms wide x 50cms deep (102" x 48" x 19 1/2"). (1)

€300-€400



**449. A set of three carved wooden and reeded Columns**, on eight circular and square bases; together with a carved Corinthian capital, 229cms (90") high. (3)

€500-€700



**450. An attractive four tier mahogany Table or Wall Shelf,** with shaped cornice and plain pillar supports; together with a three shelf Wall Bracket and a Victorian rosewood framed Tapestry Fire Screen on stand. (3)

**€180-€220**



**451. A Victorian Chest,** of two short and three long graduating drawers with turned handles, on front turned legs, approx. 112cms wide x 109cms high x 53cms deep (44" x 43" x 21"). (1)

**€150-€200**



**452. A pair of antique steel Engraving Plates,** each depicting Saints, with engraved title, a Religious oval Print and one other, as a lot. (4)

**€70-€90**



**453. A very large Victorian oval gilt and gesso Wall Mirror,** with flower and female mask crest above a rope and bead moulded frame, with a large centre oval plate within a four compartment mirror border with cartouche dividers and stylized shell terminal issuing leaf scrolls, 68" x 46" (173cms x 117cms), (some breaks and losses). (1)

**€700-€1100**



**454. The Pasadena Horseless Carriage Company Sign,** with half block model of the carriage in relief and advertising Coca Cola, with moulded arched frame. (1)

**€300-€400**



**455. M. O'Connor (XX - XXI)**

"Mad Cap," owned by Geoffrey Spencer, Coal Merchant Waterford, on the Quay Waterford, signed also inscribed verso, 16" x 21" (40cms x 53cms); another "Cruise Liner, near Waterford," watercolour signed and dated '94, and one other J. & J. Monks, "The Quay Waterford," signed and dated 1997, 13 1/3" x 17" (34cms x 43cms). (3)

**€180-€250**



**456. A 19th Century oak Welsh Dresser on stand**, the moulded top over two long shelves and two narrow shelves, flanked with two panel doors on a conforming base, with three frieze drawers and later brass drop handles, on square front legs, approx. 186cms wide x 201cms high (73" x 79"). (1)

**€300-€400**



**458. A Victorian X framed mahogany Foot Stool**, with crested floral decorated needlework seat; together with a smaller ditto with plain seat and a Victorian mahogany Prie dieu with floral needlework fabric. (3)

**€150-€200**



**460. 21st Century**

"Snowy Forest Landscape," manipulated Photograph, approx. 43cms x 243cms (17" x 96"). (1)

**€120-€180**



**457. A collection of 15 yellow ground rose design Wedgwood Cabinet Plates**, en suite with an oval and a square Dish and a Royal Worcester plume and berry design blue ground Plate by R. Seabright, three 19th Century Chinese blue and white Plates and a similar Fruit Bowl and two other Oriental porcelain Pieces. (a lot)

**€200-€300**



**459. A 19th Century hanging oak Wall Cabinet**, with divided pediment over two glazed doors and two drawers below, 35" x 23" (89cms x 58cms). (1)

**€80-€120**



**461. A Victorian brass and cast iron Shop Scale Frame**, as is. (1)

**€80-€100**



**462. A pair of 19th Century mahogany Side Chairs**, with shaped and pierced splat backs and upholstered seats, on front square legs united by H stretcher. (2)

**€120-€150**



**463. A very large Egyptian Revival Mantle Clock Garniture,** the clock lacking movement and hands, with brass mounts, including the Hathor Temple of Dendera column masks on half round pilasters, incised with Egyptian Hieroglyphics, 30cms x 64cms (12" x 25"), together with a pair of matching brass mounted polished slate Urns, each with two bull mask handles and brass winged Cleopatra masks on pyramid bases, 54cms (21") h. (3)

**€300-€500**



**464. A pair of four branch S light figural Candelabra,** with classical lady supports with shaped bases, on paw feet, approx. 74cms high (29"). (2)

**€180-€220**



**465. An unusual 19th Century oak rectangular top Side Table,** the shaped top with plain frieze on barley twist legs, on castors, approx. 190cms long x 61cms deep x 81cms high (75" x 24" x 32"). (1)

**€300-€400**



**466. An early 20th Century painted metal oversized Child's Model Toy Car,** in the style of Bugatti, with pedal action, leather interior alloy wheels and pop boot, painted red and black, as is. (1)

**€300-€400**



**467. A Royal Worcester yellow ground floral design part Tea Service,** as a lot, w.a.f.

**€80-€100**



**468. An Edwardian inlaid Display Cabinet,** the moulded top above a single astragal glazed door, on cabriole feet, approx. 65cms x 153cms (25" x 60 1/2"). (1)

**€120-€180**



**469. After William Hinks**

A set of 6 sepia Engravings depicting various stages of Linen Production in Northern Ireland, in 19th Century - showing machinery and mills etc., London. published by R. Pollard. 1791 (4 ovals) 36cms x 43cms (14" x 17"). (6)

**€400-€600**





**470. A large pair of gilt metal mounted blue and cutglass Urns**, with fixed covers, each with two scroll handles on a brass quatrefoil circular base, O.R.M., 73cms (28 1/2"). (2)  
**€300-€500**



**472. A late George IV period mahogany Sideboard**, with arched back above three frieze drawers, each with cast brass lion mask and ring handles and two cupboard doors below, on six ring turned tapering reeded legs, 200cms w (79"). (1)  
**€450-€750**



**474. A Dresden porcelain Candelabra**, modelled with two classical figures, approx. 44cms high (17"); together with a similar ditto with woman holding a basket, both as is, w.a.f. (2)  
**€50-€70**



**471. An Empire style ebonised French Portico Mantle Clock**, with ornate gilt brass mounts, the gilt dial with Roman numerals on four upward tapering columns, on rectangular two stage plinth base, 18" x 9" (46cms x 23cms). (1)  
**€200-€300**



**473. A small George IV period mahogany Open Bookcase**, with oblong moulded top and three shelves, flanked to either side with half turned and spiral reeded pilasters (adapted), 93cms x 122cms. (1)  
**€280-€350**



**475. A porcelain glaze Bust**, of Moses, approx. 43cms (17") high. (1)  
**€150-€200**



**476. An antique giltwood oval Frame**, with leaf and shell decoration with coloured print inset, approx. 74cms x 96cms (29" x 38"). (1)  
**€120-€160**



**477. A large collection of Drinking Glasses, Tumblers, Wine Glasses and other Glassware. (a lot)**  
**€100-€150**



**478. A good George III period inlaid mahogany Bureau Bookcase,** the open work swan neck pediment with two satinwood roundels, and a dentil moulded cornice, above two astragal glazed doors over a slope front opening to reveal a nicely fitted interior with secret compartments, drawers, pigeon holes and central cupboard, above three long and two short drawers, on bracket feet, 38 1/2" (97cms). (1)  
**€500-€700**



**479. A pair of carved mahogany single Bed Ends. (2)**  
**€150-€200**



**480. A good Empire mahogany and brass mounted Dressing Table,** the arched swing frame mirror supported by two pillars, each with a brass urn finial above a rectangular top with a frieze drawer, all supported by four brass mounted columns united by a stretcher shelf below, 54" (127cms). (1)  
**€500-€700**



**481. An Edwardian walnut Purdonium,** with dentil moulded cornice with shelf on turned supports, above a curved and carved compartment opening to reveal a metal lined interior for coal, on four shaped legs, 87cms x 38cms (34" x 15"). (1)  
**€200-€300**



**482. Irish School - 20th / 21st Century**  
 "View on Temple Street, Dublin, with view of the Children's Hospital and St. Georges Church." watercolour and pen and ink, 36cms x 43cms (14" x 17"). (1)  
**€200-€300**



**483. Marquerite Dolan - XX-XXI**

"Apple Harvest" "Tomato and Cheese" watercolour, a pair, each approx. 50cms x 40cms (19 1/2" x 16") in gilt frames.(2)

**€150-€200**



**485. A pair of brass Candlesticks**, each fitted with a pink reeded glass Oil Lamp, with matching pink glass shades, 61cms (24"). (2)

**€120-€160**



**487. A Victorian style gilt Mirror**, with floral decoration and bevelled glass, approx. 84cms x 74cms (33" x 29"). (1)

**€150-€200**



**484. An Irish Georgian period heavy mahogany gate leg Table**, on pad feet, as is, approx. 110cms long (43"). (1)

**€250-€350**



**486. A 20th Century carved green jadeite Model**, of an Imperial Elephant Shrine with buddha, in a pagoda, approx. 51cms (20") high. (1)

**€150-€200**



**488. An 18th Century walnut Side Chair**, the shaped back with splat center above drop in seat on front Queen Anne legs united by shaped H stretcher. (1)

**€200-€300**



**489. A modern nest of Tables,** with spider legs supports; together with a demi-lune Yacht Table. (2)

€80-€120



**490. A set of 11 (10 + 1) William IV mahogany Irish Dining Chairs,** each with shaped and carved open backs, above padded seats and concave front on hexagonal tapering front legs. (11)

€700-€900



**491. Poster:** "An Tostal, Ireland at Home, 5th - 26th April 1953," coloured lithograph, with central harp and silhouette images of various sport figures and flags, approx. 99cms x 61cms (39" x 24 1/2"); Advertisement Signs: "Players Weights 5 for 2d, Cigarettes (John Player & Sons), cold. print, approx. 43cms x 60cms (17" x 2 1/2"), with illustration after W.H. Byles, framed (Worn); [Irish Army] "G.P.O. Dublin, Republic Day, 18th April, 1949," calendar with cold. print, framed.

€200-€300



**492. Elizabeth Rivers, Irish (1903-1964)**

"Island View from the Ferry," pencil sketch, approx. 17cms x 24cms (7" x 9 1/2") Frederick Gallery Label on reverse, in gilt frame; and Alexander Williams, R.H.A. (1846-1930) "Haren Poole, 1913," pencil sketch, inscribed, approx. 13cms x 22cms (5" x 8 1/2") label on reverse, in gilt frame; and Rene Georges Hermann - Paul (1864-1940) "Effects de Guerre, Planteur de Potatoes, et Chatelain de nos Jours," watercolour, approx. 31cms x 23cms (12" x 9"), signed "Réne", mounted and framed (3)

€200-€300



**493. Terence Attridge Williams, Irish (1912-1998)**

"West of Ireland Scene with Lake in foreground, Cottage and Mountains in distance," O.O.B., approx. 35cms x 46cms (14" x 18"), signed lower left, framed. (1)

€100-€200



**494. Attributed to John Butler Yeats, Irish (1839-1922)**

"Housekeeping," pencil sketch, depicting a Lady in work attire dusting a mirror, approx. 33cms x 19cms (13" x 7 1/2"), mounted and framed. (1)

€400-€600



**495. 20th Century Continental School**

"Seated Female Nude," pencil study, approx. 46cms x 37cms (18" x 14 1/2"), mounted, gilt frame. (1)

**€120-€180**



**497. A Chinese blue and white landscape Bowl**, with typical scene and script, the base with two character mark; together with a Chinese blue and white floral tall Bowl with six character mark to base. (2)

**€200-€300**



**499. A large Oriental mother-of-pearl inlaid Tray or Wall Panel**, with animal, bird and fish decoration, approx. 92cms (36") diameter. (1)

**€100-€150**



**496. Two colourful Murano glass Figures**, modelled as clowns, each approx. 31cms (12") high. (2)

**€100-€150**



**498. Three enamel dial varied sized silver and plated Pocket Watches**, as is. (3)

**€80-€120**



**500. A large domed top Trunk**, with two carrying handles and brass lock; together with a smaller ditto, as is. (2)

**€100-€120**



**501. A large pine Plinth or Stand**, with arched sides supported on four turned pillar supports; together with a similar smaller ditto, as is. (2)

**€120-€150**



**503. A large silver plated two handled tall Cup and Cover**, for "Celebration Ale Perpetual Cup," the lid of domed form with greyhound surmounted inscribed on a turned pillar upright with circular base, approx. 51cms (20") on an ebonised wooden base. (1)

**€150-€250**



**505. A Victorian mahogany Cheval Mirror**, with arched framed glass, with S scroll support on shaped base. (1)

**€150-€250**



**502. An assimilated bamboo framed Dinner Gong**, with carrying handle; together with a brass Stick or Umbrella Stand; a 19th Century mahogany Side Chair with latte back above leather seat on front turned legs., as is. (3)

**€80-€120**



**504. A collection of Military Artefacts**, comprising percussion gun and other relics, as a lot, w.a.f. S.N.S.R. (1)

**€40-€60**



**506. A collection of varied Umbrellas**, with ornate handles, as a collection. (7)

**€120-€140**



**507. A large part Dinner Service**, approx. 50 items comprising plates, side plates, dishes, tureens, by Ridgeway Stoke on Trent, decorated in chinoiserie design. (a lot)

**€200-€300**



**508. An attractive Edwardian oak cased Mantle Clock**, the domed top with multiple brass finials above an arched brass and silver dial, with ormolu mounts on a plinth base with scroll feet. (1)

**€200-€300**



**511. A set of 10 pink ground fruit decorated and gilt highlighted Cabinet Plates**, together with four Dishes en-suite, a set of 11 blue ground Plates and Comport en-suite, two Belleek Pieces and a masked handle Urn and cover with floral pattern on green ground. (a lot)

**€150-€200**



**513. A pair of modern Amphora style aluminum and glass vase shaped Table Lamps**, with mask handles on square bases with cream shades, 31" (79cms). (2)

**€180-€250**



**509. A wooden handled and brass School Bell**; together with a brass Weighing Scales. (2)

**€70-€90**



**512. An Irish Georgian style mahogany Side Table**, with moulded top over plain frieze issuing ornate carved floral pierced decorated apron on cabriole legs with hairy paw feet, approx. 185cms long x 63cms deep x 91cms high (83" x 25" x 36"). (1)

**€500-€700**



**514. An oval serpentine shaped papier mache Tray**, by B. Walton & Co., c. 1845, decorated with colourful flowers, against a burgundy ground, stamped, 26" (66cms), and another rectangular Tray with dried flowers. (2)

**€200-€300**



**510. A pair of large moulded glass Ceiling Shades**, with domed brass fittings and three smaller ditto. (5)

**€100-€150**



**515. A 19th Century kingwood Bureau Abbatant**, in the Louis XVI style with marble top and frieze drawer, above a fall front writing compartment and two cupboard doors below on square tapering legs, with block feet, 59 1/2" x 35" (151cms x 89cms). (1)

**€200-€300**



**517. A good pair of late 19th Century carved walnut and parcel gilt Stools**, each with a square serpentine shaped padded top covered in gold damask, raised on four carved cabriole legs, 20"h x 21" w (51cms x 53cms). (2)

**€600-€800**



**519. Raffaello Conti - Italian 19th Century**

"Castello de Milano," & "Palazzo Bamula, Venezia," a pair of watercolours, both inscribed and dated 1898, verso, 12 1/2" x 9" (32cms x 23cms). (2)

**€400-€600**



**516. A set of 3 Medieval style carved X framed walnut Stools.** (3)

**€200-€300**



**518. A small George III period mahogany Pembroke Table**, with D shaped flaps on six tapering legs with pad feet, 26" x 24" (66cms x 60cms). (1)

**€200-€300**



**520. After Peter Curling (1955)**

A large coloured Print "Classic Performs at the Park," one of an original single Edition Limited to 500 copies, Signed by the Artist in pencil and numbered 454 / 500, 14" x 27" (36cms x 69cms). (1)

**€200-€300**





**521. A pair of attractive marble top inlaid mahogany single door Bedside Lockers**, with oval medallion, decorated in the Adams taste on ebony strung square tapering legs, with brass castors. (2)  
**€300-€400**



**523. An Edwardian two door Display Cabinet**, the moulded cornice above glazed sides and glazed doors on short cabriole legs, approx. 107cms wide x 119cms high (42" x 47"). (1)  
**€120-€140**



**525. A William IV period mahogany Dining Room Armchair**, with tapestry style seat and a small Tub Armchair, covered in striped pink floral fabric. (2)  
**€100-€200**



**522. A good suite of Waterford crystal Drinking Glasses**, comprising 19 Tumblers, 10 white Wines, 11 Ports, 5 Sherries, and 4 large red Wines. (49)  
**€300-€500**



**524. A large vase shaped cream ceramic Table Lamp**, with two handles, drapes and tassels above a reeded body on attractive cast gilt brass base with scroll feet, 102cms (40"). (1)  
**€400-€600**



**526. An attractive Georgian style mahogany Chest**, of two short and two long drawers in the manner of Thomas Chippendale, with blind chinoiserie frieze and uprights with lion mask brass handles on ogee bracket feet, approx. 122cms wide x 91cms high x 56cms deep (48" x 36" x 22"). (1)  
**€250-€350**



**527. A large quantity of Pewter,** comprising of plates, jugs, candlesticks, teapots, as a lot, w.a.f. (1)  
**€180-€220**



**528. A Victorian giltwood Overmantel,** with original plate mirror (damaged) approx. 175cm x 147cms (69" x 58"), as is. (1)  
**€150-€200**



**529. An Edwardian inlaid mahogany and satinwood banded drop leaf Table,** with three demi-lune flaps raised on three shaped supports united by a stretcher shelf, 25" (63cms); together with a small rectangular top Table, on turned legs. (2)  
**€150-€250**



**530. An inlaid and brass mounted Napoleon style mahogany Corner Cabinet,** of slender proportions with eagle crest, above a Gothic glazed door and a solid door below on plinth base, 221cms x 69cms (87" x 27"). (1)  
**€200-€300**



**531. A brass Fender,** with ball finials above a balustrade frieze on moulded base, a copper Bed Warmer with turned wooden handle, a brass Coal Bucket, and a brass Fire Tongs and Poker. (5)  
**€100-€150**



**532. A George III mahogany slope front Bureau,** the fitted interior with pigeon holes, drawers, cupboard and secret compartments, above four long drawers on bracket feet, 36" (91cms). (1)  
**€300-€400**



**533. A George IV mahogany Window Seat**, with railed seat and caned ends on ring turned legs. (1)  
**€200-€300**



**535. A fine quality 19th Century Irish mahogany Economy Table**, in the manner of Gillingtons, Dublin, the moulded top with rounded edge, over plain frieze on sixteen reeded tapering legs terminating on brass and porcelain castors, approx. 320cms long x 140cms wide (126" x 55"). (1)  
**€800-€1200**



**537. An attractive pair of Louis XVI style giltwood Fauteuils**, with floral motif with padded back and seat, covered in cream striped fabric, on front cabriole legs. (2)  
**€200-€300**



**534. A mahogany Washstand**, in the Georgian style, with segmented fold-out top above two cupboard doors and a lower drawer, on heavy square legs, 20" (51cms)w. (1)  
**€80-€120**



**536. A 19th Century Italian 'Bolognese' design carved giltwood Wall Mirror**, with floral and leaf decoration, and original bevelled plate glass, approx. 91cms x 76cms (36" x 30"). (1)  
**€300-€400**



**538. A large blue and white Chinese 'Dragon' design Dinner Service**, by Booths, comprising platters, plates, tureens, etc.; together with some blue and white Copeland Cups with landscape pattern, as a lot. (1)  
**€350-€450**



**539. A very unusual pair of bobbin turned and framed walnut and pine Side Tables, in the manner of Strahan, indistinctly stamped ODEL, each approx. 96cms w (37 1/2") wide. (2)**

**€250-€350**



**541. Plateware: A large engraved silver plated monogrammed Victorian Samovar, and a modern four piece Tea & Coffee Service, as a lot, w.a.f. (5)**

**€80-€100**



**543. Vicky Crowley, Irish XX - XXI**

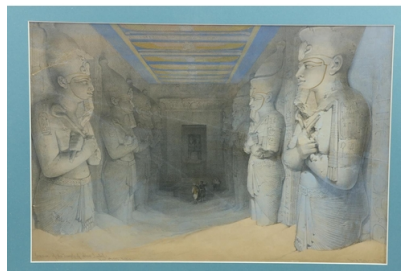
"Sunrise," watercolour, Seascape with figures on beach, approx. 33cms x 23cms (13" x 9"), mounted and framed; **Andrew Foden Irish XX-XXI, "The Mineshaft,"** coloured litho, Limited Edn., signed No. 4/25, approx. 76cms x 27cms (30" x 11"), framed. (2)

**€180-€220**



**540. A Hardy's Alwick patent aluminum Fishing Reel, 3 1/4" (8cms), in original Hardy Alwick leather case, another Alwick 4 1/2" (11.5cms), a large Forrest's patent Reel, 4" (10cms), a large Hardy's patent 'The Silex' casting Reel, 4 1/4" (11cms) in fitted case, a Garcia Mitchell French fixed Spool Reel, other assorted Fishing Gear and a brass bound leather cartridge case, flies, hooks etc. (a lot)**

**€200-€250**



**542. After David Roberts R.A. (1796-1864)**

**A fine set of 20 Lithographs** in colour depicting various Views in Egypt & Nubia and surrounding regions, by Louis Haghe in landscape and portrait forms, all titled with typed description verso, each in attractive maple frame, approx. 32cms x 48cms (12 1/2" x 19") landscape; 48cms x 34cms (19" x 13") portrait. (20)

**€800-€1200**



**544. Dame Elizabeth Blackadder, RA, RSA (1931-2021)**

"Cats and Flowers," cold lithograph, signed Limited Edn., No. 4/75, approx. 61cms x 84cms (24" x 33"), metal frame; **Pam Calore, American XX-XXI, "Breakfast Patio,"** coloured print, signed Limited Edn., No. 65/250, approx. 70cms x 98cms (28" x 39") framed. (2)

**€400-€500**



**545. Cobus Van der Walt - 21st Century South African School**

"Buffalo," O.O.C., inscribed lower right (Cabtography 518 25', E23, 30"), unframed, approx. 130cms x 160cms (51" x 63"). (1)

**€350-€450**



**547. A lift top pine Chest,** constructed with pine planks, 48" (122cms). (1)

**€80-€120**



**549. A pair of square faux tortoiseshell and brass Occasional Tables,** of square serpentine form on shaped legs and stretchers, 14" x 19" (37cms x 49cms). (2)

**€250-€350**



**546. 21st Century Irish School**

"Abstract Maze, black on white" O.O.C., approx. 163cms x 254cms (64" x 100"), unframed. (1)

**€350-€450**



**548. A fine quality Irish Georgian period mahogany Pembroke Table,** with 'D' shaped drop leaves, single frieze drawer with ebonised handles, on square tapering legs, with brass castors, approx. 92cms (36") long. (1)

**€250-€320**



**550. A Victorian mahogany Buffet,** with carved and shaped gallery back above shaped supports and open shelf, on a base with three panel doors, approx. 153cms wide x 122cms high x 56cms deep (60" x 50" x 22"). (1)

**€200-€300**



**551. A late George mahogany swing frame Dressing Table Mirror**, with oval plate and frieze drawer on ogee bracket feet, 13 3/4" (35cms); together with two similar Dressing Table Mirrors. (3)  
**€150-€200**



**553. May Molony**  
"Woodland Scene with Cherry Blossom," 9 3/4" x 13 3/4" (25cms x 35cms), signed and dated May 28, 1901, another Still Life "Flowers," by the same hand, signed and dated '05, and one other watercolour. (3)  
**€150-€180**



**555. A pair of green ground etched Vases**, decorated with grapes, three varied cutglass Fruit Bowls, a tubular Decanter and stopper and other miscellaneous Glassware. (a lot)  
**€120-€140**



**552. A good black Top Hat**, by Woodrow Dublin, Belfast, Manchester, Glasgow, Liverpool, in fitted leather case, another cased grey Top Hat, also by Woodrow and a small leather case. (3)  
**€100-€200**



**554. A brass Table Lamp**, modelled as a Polo Player on horseback, on an ebonised plinth base; together with another adjustable ornate brass Table Lamp with coloured glass shade. (2)  
**€100-€150**



**556. A heavy brass pillar Table Lamp**, on a decorated plinth base. (1)  
**€70-€100**



**557. A Georgian style Vintage mahogany 'Sacre Couer' Bird Cage on stand**, approx. 190cms high x 72cms squared (75" x 28") (1)  
**€300-€400**



**558. A pair of Regency style ormolu mounted and gilded metal oversized Urns, with decorative painted panels on ormolu base, each approx. 152cms high (60"). (2)**

**€200-€300**



**559. A pair of large French style giltwood Armchairs, with colourful peacock design with padded back and seats, with front cabriole legs. (2)**

**€300-€400**



**560. A set of ten modern low Pub Stools, with deep button seats with turned legs. (10)**

**€200-€300**



**561. A fine quality 19th Century Empire / Egyptian Revival Low Cabinet, in the manner of George Smith (1756-1826), the moulded top over a frieze with ornate ormolu mounts, over multi panelled glazed doors, flanked by brass inlaid and ormolu sphinx columns, on block base, approx. 112cms wide x 97cms high x 36cms deep (44" x 38" x 14"). (1)**

**€400-€600**



**562. Walsh (Wendy) & Nelson (Chas.) *An Irish Florilegium*, Wild and Garden Plants of Ireland, 2 vols. folio Lond. 1983 & 1987. Both First Edns., fine tipped-in and other full page cold. plts., cloth & orig. pict. d.w. V. good. (2)**

**€200-€300**



**563. Sean Keating, RHA (1889-1977)**

"Landscape," watercolour, Preparatory Study of Row of Cottages, approx. 26cms x 42cms (10 1/4" x 16 1/2"), inscribed and signed, mounted, gilt frame. (1)

**€1500-€1800**



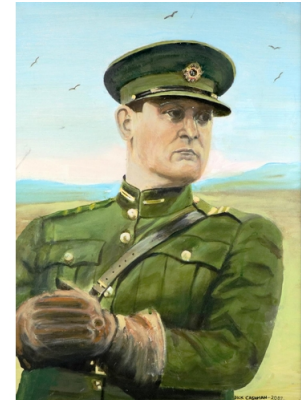
**564. A Victorian mahogany framed tall Firescreen**, with carved cornice, inset with a needlework depicting ladies of leisure in an opulent interior on outplayed paw feet united by stretcher, approx. 142cms high x 67cms wide (56" x 26 1/2"). (1)

**€150-€250**



**566. A square top carved wooden Occasional Table**, a carved top Footstool, a similar design mahogany Hepplewhite Side Chair with drop in leather seat, a brass bound lift top Chest and a stained wooden stick and Umbrella Stand. (5)

**€120-€140**



**568. Dick Cashman, 20th Century Irish**

"General Michael Collins," O.O.B., half length Portrait depicting Collins in Military Attire standing in a landscape, approx. 69cms x 50cms (27" x 19 1/2") signed lower right, black frame. (1)

**€250-€350**



**565. A pair of attractive First period Belleek floral encrusted Creamware Vases.** (2)

**€150-€200**



**567. A pair of similar mahogany framed Carver Armchairs**, with scrolled arms padded seats on variant front legs; together with a pair of Victorian balloon back Dining Chairs on front turned tapering legs. (4)

**€150-€200**



**569. A set of 6 Irish Georgian style glass Sweet Meat Bowls**, with shaped stems on circular bases. (6)

**€140-€180**





**570. Silverware etc: A varied collection of Trinkets**, including three silver engraved or embossed vesta cases, two novelty silver pepper shakers, two pocket watches, and tie pins, as a lot, w.a.f. (1)  
**€80-€100**



**572. An attractive 19<sup>th</sup> Century mahogany Side Table**, with crossbanded top over single frieze drawer, with turned handles, shaped uprights united by turned stretcher on outsplayed legs, approx.. 65cms (25 1/2") wide. (1)  
**€120-€180**



**574. A pair of Parker Knoll type Armchairs**, covered in cream sack cloth fabric with loose cushions on front square feet, with matching Footstool. (3)  
**€200-€300**



**571. A Victorian Coalbrookdale Hanging Wall Shop Sign.** (1)  
**€150-€200**



**573. A Victorian walnut and marquetry kidney shaped Ladies Writing Table**, on two baluster shaped supports, on a quadruple pod, 36" (92cms). (1)  
**€150-€200**



**575. A pair of attractive mahogany Torchers**, with shaped pie crust tops on reeded pillars with heavy carved ball n' claw feet, each approx.. 106cms (42") high. (2)  
**€120-€180**



**576. An Irish 19th Century mahogany Bureau**, stamped J.Kerr & Co., No. 68931, the slope front opening to reveal a fitted interior above four graduating long drawers with turned handles, on bracket feet base, approx. 100cms wide x 53cms deep x 114cm high (39 1/2" x 21" x 45"). (1)

**Provenance:** By family tradition A gift from Sir Winston Churchill to Sir Bindon Blood and by direct Family descent.

**€1000-€1500**



**577. A collection of four domed design milk glass Shades. (4)**

**€40-€60**



**578. A fine quality Georgian period Irish mahogany Chest on Chest**, the moulded dental cornice over two short and three long graduating drawers on a conforming three drawer base, all with oval ornate brass drop handles terminating on splayed legs, 183cms x 124cms (72" x 49"). (1)

**€500-€700**



**579. A Georgian mahogany tripod Occasional Table**, with associated rectangular top, 26" (66cms). (1)

**€100-€200**



**580. An Italian oblong modern designer mahogany Side Table**, with reeded front frieze on four square tapering legs united by an elongated X shaped stretcher, 7"w x 31"h x 19 3/4"d (170cms x 79cms x 50cms). (1)

**€400-€600**



**581. An oblong leather covered Footstool**, on walnut frame, 32 1/2" (83cms). (1)

**€80-€120**



**582. A Chinese wooden Altar Table**, with rectangular top on square tapering legs on curved feet, 34" x 38 1/2" (86cms x 98cms). (1)  
**€400-€600**

**584. A Minton ceramic Majolica style polychrome Jardinière Stand**, 28" (71cms). (1)  
**€200-€300**

**586. A four-fold fabric covered Draught Screen; together with a 19th Century tripod Wine Table.** (2)  
**€120-€140**



**583. A turned giltwood Jardinière Stand**, with circular top on a spiral reeded stem and square base, 40" (102cms). (1)  
**€150-€250**

**585. A brass mounted oval drop side Butlers Tray type Occasional Table**, saw cut handles on X framed stand, and a Victorian style Child's mahogany Side Chair, and a 19th Century mahogany swing frame Dressing Table Mirror. (3)  
**€150-€180**

**587. A pierced Royal Coat of Arms trifold Stand**, a Fuel Bin, a Tray, a Candlestick Inkwell etc. As a lot.  
**€70-€90**



**588. A fine quality Irish Provincial mahogany drop leaf Table**, with demi-lune flaps, gate leg action on pad feet, approx. 109cms (43") wide. (1)  
**€180-€250**



**590. An Italian modern glass top gilt metal framed Coffee Table**, on tubular tapering legs, united by C stretcher, approx. 122cms x 91cms (48" x 36"). (1)  
**€300-€400**



**592. A modern designer L shaped or Corner Couch**, covered in grey velvet fabric, on chrome legs, approx. 264cms x 167cms (104" x 66"). (1)  
**€500-€600**



**589. A mahogany Lamp Standard**, with cream pleated shade, circular shaped tray top carved and reeded column on tripod base, with ball and claw feet; together with a painted satinwood circular top Wine Table, on tripod base. (2)  
**€150-€200**



**591. A pair of good quality hide covered Easy Club Armchairs**, with loose cushion seats covered in tan hide. (2)  
**€400-€600**



**593. Bertha Rhodes Carrick (Exh. 1905 - 1912)**

"City River Scene with Figures Chatting," watercolour, Signed, 10" x 14" (35cms x 36cms). (1)  
**€150-€220**



**594. Pompeo Fabri (1874 - 1959)**

"Mountain Landscape with Castle," watercolour, Signed and inscribed Roma, 13" x 22 3/4" (33cms x 58cms). (1)

**€300-€400**



**596. Emma Faull (1956)**

"Red Headed Weaver," watercolour, Signed and dated 2006, 17" x 11 3/4" (43cms x 29cms). (1)

**Provenance:** Tryon Gallery, Bury St., London

**€200-€300**



**598. An attractive 19th Century oval miniature Portrait of young Woman, on porcelain, probably KPM Germany, in gilt frame, 4 1/2" x 3" (11.5cms x 8cms). (1)**

**€200-€300**



**595. B. Murphy**

"Over the Fence," Horse Racing Scene, Signed lower right, mixed media, 23" x 16" (58cms x 41cms). (1)

**€150-€200**



**597. Giuseppe Rivarili (1885 - 1943)**

"Cow and Two Calves," pastel and watercolour, 35" x 27" (88cms x 68cms). (1)

**€500-€700**



**599. 18th Century Continental School**

**An attractive sepia Drawing, monochrome with basket of flowers, 5 1/4" x 4 1/4" (13cms x 11cms). (1)**

**€150-€220**



**600. An attractive set of 4 hand coloured Bird Prints, after E. Lear, in attractive mounts and frames, 15" x 12 1/2" (38cms x 31cms). (4)**  
**€280-€350**



**602. Photographs**  
**Co. Clare Interest:** "Home Rule in Clare," William Bindon Blood and his bodyguard, 1893. set of three group Photographs of Bindon Blood and his Army Comrades, uniformly framed as photographs, with all faults. (4)  
**€200-€300**



**604. Cobus Van der Walt - 21st Century South African**  
 A set of 4 atmospheric Wildlife Paintings of Eagles in Flight and standing Gazelle, O.O.C., approx. 156cms x 68cms (61 1/2" x 27"); 127cms x 63cms (62" x 25"), each signed. (4)  
**€1000-€1500**



**601. Equestrian Interest:** "Moscow Flyer, The Martell Cognac Melling Steeplechase, April 2nd, 2004," a piece of framed memorabilia, with photograph and horseshoe, 15 1/2" x 11 1/4" (39cms x 29cms). (1)  
**€80-€150**



**603. A group of 5 varied Watercolours, and O.O.C., of various Pastoral and Coastal Scenes, some signed in various frames. (5)**  
**€300-€400**



**605. A 19th Century Middle Eastern Moorish inlaid Table, with central Arabic text and mother-o-pearl decoration, approx. 54cms high x 42cms wide (21 1/2" x 16 1/2"). (1)**  
**€100-€150**



**606. An attractive Georgian style bow fronted Serving Table,** the inlaid and crossbanded top over single centre frieze drawer, flanked by two conforming panel doors on front tapering square legs, approx. 122cms wide x 57cms deep x 89cms high (48" x 22 1/2" x 35"). (1)

**€180-€220**



**608. A collection of varied Walking Sticks,** some with silver mounts and engraved, of various heights. (5)

**€80-€120**



**610. A Windsor type high back Kitchen Chair,** with S scroll arms moulded seat on front turned legs; together with the frame of a Foot Stool on turned legs with castors. (2)

**€80-€120**



**607. An attractive Egyptian Revival three branch silver plated Centre Candelabra,** decorated with rams head reeded column, on a shaped base with winged horses, 51cms (20") high. (1)

**€150-€200**



**609. An attractive painted Dolls House,** with red brick chimney stacks, opening sides, balcony and porch and fitted interior with some toys, approx. 71cms high x 64cms wide (28" x 25"). (1)

**€150-€200**



**611. A set of four profusely carved and ebonised Column Capitals,** decorated in the Corinthian style; together with three carved shell and leaf Reliefs. (7)

**€300-€400**



**612. A large collection of varied Plateware**, comprising trays, condiments, cutlery, and some brassware etc. As a lot, w.a.f. (1)  
**€60-€80**



**614. A 19th Century oak tripod Occasional Table**, with circular tilt top, 20" (51cms), with circular pillar support on triform base. (1).  
**€120-€150**



**616. A rectangular inlaid mahogany Cellaret or Wool Box**, with hinged cover, raised on short square tapering legs, 20 1/2" x 16" (552cms x 41cms). (1)  
**€100-€200**



**613. A 19th Century Estate made Library Ladder**, with 9 steps, approx. 239cms (94") high. (1)  
**€200-€300**



**615. An oak Apprentice Piece design of a three drawer Commode**, with shaped gallery back and glass handles on plinth base. (1)  
**€80-€100**



**617. A Victorian mahogany Childs Feeding Chair**, the shaped seat with canework back and base on front turned legs, together with stand on sabre legs. (1)  
**€80-€120**





**618. A pair of Georgian mahogany Knife Boxes**, with hinged lids, with inlay on reverse of lids (lacks interiors). (2)

**€200-€300**



**619. A very good late 18th Century large Chinese Vase**, attractively decorated with enamel type pink coloured flowers and other rust, blue and green, approx. 35.5cms (14") high (lacking lid), on a carved hardwood stand. (2)

**€200-€300**



**620. A pair of 20th Century cream ground Japanese Satsuma Vases and covers**, the dome top lid with mythical dogs surmounted with similar handles on triform base, the overall red ground decorated with geometric design with figures in typical attire, approx. 66cms high (26") some repair; together with a blue and white Platter, depicting a lake house scene. (3)

**€300-€400**



**621. A pair of Lustres on shaped bases**, together with a collection of etched and plain glass shades. (a lot)

**€150-€200**



**622. A pair of 19th Century French ormolu four branch five light Candelabra**, each with bulbous porcelain hand painted body with ormolu lion mask handles, on shaped bases, each approx. 53cms (21") high; together with a smaller three branch four light porcelain floral decorated Candelabra, 37cms (14 1/2") high. (3)

**€400-€600**



**623. A fine quality large 19th Century porcelain Vase**, Meissen, the domed and pierced lid with flowers and fruit surmounted, the urn shaped main body with classical female heads and flower and fruit encrusted design, with attractive hand painted body, the short centre support with further similar pattern on a quatreform base of conforming design, approx. 97cms high (26 1/2"). (1)

**€700-€900**



**624. An attractive 20th Century Japanese Imari Bowl**, of typical design with floral centre, approx. 30cms (12") diameter; together with a similar Imari Plate, approx. 30cms (12") diameter. (2)

**€120-€180**



**626. A varied lot comprising a carved Scent Bottle**, with ornate lid and filigree work, an agate Pill Box and other Curio Boxes, a bronze Model of a Dachshund, a paper weight, a cased Crucifix and a Child's Toy Soldier Set, and three Pre-Raphaelite type Frames, as a lot, w.a.f. (1)

**€250-€350**



**628. A late 18th Century / early 19th Century Chinese blue ground bulbous Vase**, decorated with multiple panels depicting figures, animals and birds in typical landscapes. (1)

**€400-€500**



**625. Ethnographical: - A large heavy carved wooden Fertility Bust**, approx. 35cms (14") high. (3)

**€80-€100**



**627. A mahogany three drawer Curio Locker**, with turned handles on tapering legs, united by shelf stretcher, an Edwardian oak four drawer Collectors Table Cabinet, with recessed handles and a mahogany hinge top Box. (3)

**€100-€150**



**629. A 20th Century Japanese Satsuma Vase**, with flared neck, decorated with geometric design and gentleman figures in native attire, approx. 51cms (20"). (1)

**€140-€180**



**630. F.L. McConnell, XX Irish School**

"Donegal Bay," O.O.C., extensive landscape, with estuary and mountain in distance, approx. 51cms x 76cms (20" x 30"), signed lower left, unframed. (1)

€80-€120



**632. 19th Century English School**

"Lady seated at Library Desk," and "Lady seated by a Fire," a pair, watercolours, both atmospheric detailed interior scenes, each approx. 36cms x 26cms (14" x 10 1/4"), gilt mount, matching ornate gilt frames. (2)

**Provenance:** Sir Robert Arnot.

€350-€420



**634. An attractive 19th Century French gilt Mantle Clock,**

depicting a young lady in low cut dress leaning against a pillar, with inset enamel clock face with Roman numerals on a shaped base, with floral garlands and trophies with separate giltwood base, approx. 45cms (18") high. (1)

€150-€250



**631. Leslie MacWeeney, Irish (b. 1935)**

"Girl Beside a Wall," charcoal study, approx. 55cms x 38cms (22" x 15"), signed lower right. Dawson Gallery label on reverse, cloth mount, painted frame. (1)

€200-€300



**633. 19th Century Indian School**

A group of 27 miniature oval and portrait Mica Drawings, depicting male and female figures in native attire carrying out daily chores, preparing food, playing music etc., all housed in matching gilt frames. (3)

**Provenance:** Sir Robert Arnot

€250-€350



**635. A 19th Century brass Carriage Clock,**

with hinged carrying handle, enamel dial with Arabic numerals by Leroy, Paris, in original leather carrying case; together with a small brass French Carriage Clock, with white dial with Roman numerals, as is. (2)

€120-€180



**636. A very good spelter type "Figure of a Wild Horse,"** 31cms high, on wooden stand, and a Spelter two handled Vase (2)  
**€80-€120**



**638. An attractive large classical design blue and milk glass gilt highlighted two handled Wine Cooler;** together with a Lalique type blue and frosted glass two handled metal mounted Wine Cooler with grape and vine decoration, also a Mary Gregory type three part Bowl and cover and saucer and a matching Bowl and cover, en-suite. (4)  
**€200-€300**



**640. A 19th Century Irish giltwood circular leaf decorated Mirror,** by R.W. Clarke, Cork (with label) original plate mirror, 53cms diameter (21"). (1)  
**€200-€300**



**637. A 19th Century Irish Waterford cutglass Bowl,** on stand. (1)  
**€150-€200**



**639. A 19th Century Toleware type Box,** decorated with floral pattern, lift out handles, an Oriental wooden Box decorated in relief with birds and flowers, a black lacquered Chinese oblong Box with brass lock. As a lot. (3)  
**€80-€120**



**641. A pair of 19th Century Chinese horse-shoe shaped rustic design wooden Chairs,** painted red. (2)  
**€150-€200**



**642. An early 'Archaic' type Chinese cloisonne two handled trumpet shaped Vase,** with fish handles on turned base (some repairs). (1)

**€80-€120**



**644. A 19th Century French kingswood marquetry Bijouterie Box,** with glazed top and padded interior, an Anglo-Indian coromandelwood lift top Box, the lid reverse inlaid with elephant and floral decoration and a Regency sarcophagus shaped Tea Caddy. (3)

**€200-€300**



**646. After the Antique**

**Four varied porcelain and terracotta Busts,** and Sculptures, as a lot. (4)

**€200-€300**



**643. After F. Barbedienne**

An attractive gilded bronzed Bust of an elegant Lady with ornate headdress and low cut top, on socle base, surmounted on square base, approx. 40cms high, together with "Amalthea & Jupiter's Goat," depicting an attractive Model of a Young Lady in semi-dress resting at a rock with goat, on a naturalistic base, approx. 43cms high (17"), foundry stamp. (2)

**€200-€300**



**645. A blue and white Davenport Naval design Dish,** another classical design blue and white gilt highlighted Tray, an oval creamware Dish with classical pattern, a varied set of floral pattern Cabinet Plates, a Serves type blue ground gilt highlighted Dish and cover, a pair of early Continental domed top floral decorated painted hinge top ormolu mounted Bowls, a pair of Continental floral decorated gilt Jars and lids, a Minton acorn pattern Jug and other varied Pieces, as a lot, w.a.f. (1)

**€200-€300**



**647. A 19th Century walnut inlaid and crossbanded Box,** with padded interior, another similar and a large ornate brass and mother-of-pearl inlaid Box, as a lot. (3)

**€150-€180**



**648. A collection of varied Plateware**, including tea caddys, cased cutlery plate warmers, an embossed silver powder box, and other silver mounted vanity items, monogrammed with M and other items, as a lot, w.a.f. (1)

**€150-€200**



**650. In the Manner of Adolfo Cipriani, Italian (1857-1941)**

"Art Nouveau Lady with Butterflies," marble depicting elegant lady in light dress, floral decorated hair, on naturalistic base, approx. 66cms high (26"). (1)

**€200-€300**



**652. A pair of fine quality floral decorated and gilt highlighted trumpet shaped two handled Wine Coolers**; together with a two tier gilt highlighted Centerpiece on triform base. (3)

**€200-€300**



**649. A pair of Art Deco type stain glass oval shaped Wall Lights**, and shades. (2)

**€80-€100**



**651. A pair of attractive Continental 'Augustus Rex' porcelain Vases**, with gilt rims, painted panels with classical figures and cherubs, with swan head handles on square bases, each approx. 42cms (16 1/2") marks on base. (2)

**€250-€300**



**653. A large 19th Century marquetry and inlaid Ladies Lap Desk**, with fitted interior, a 19th Century walnut bass inlaid Jewellery Box and a kingswood and brass mounted Jewellery Box. (3)

**€150-€200**



**654. A varied collection of Ethnographical and other Animal handled Walking Sticks.**  
(as a lot)  
**€180-€220**



**656. A set of 8 relief Wax Seals,** within a pair of cream painted circular frames, another set of four similar ditto, together with a set of 12 chalk portrait Intaglios with key to sitters, and a pair of oval coloured prints depicting Royal Wedding Scenes. (6)  
**€100-€200**



**658. A pair of Continental Figures,** of a girl with sheep and its companion, male in similar attire; together with an attractive floral encrusted cream ground and cherub Bowl and an early Staffordshire Figure of a young couple. (4)  
**€100-€150**



**655. A large collection of blue and ruby Glassware,** comprising bottles, vases and bowls, as a lot, w.a.f. (a lot)  
**€100-€150**



**657. A pair of late 18th Century Delft blue and white Wet Drug Apothecary Jugs and Covers,** one for A Cucumeris, the other for O Camoemeli, each with a short spout and reeded handle on circular stem base, 12 1/4" (31cms). (2)  
**€300-€400**



**659. A late 19th Century bronze Figure,** of a Medieval Lady wearing a long dress, a bead necklace and a long plait of hair to her back, on octagonal base, 53cms (17"). (1)  
**€100-€150**



**660. A pair of 19th Century attractive giltwood two branch Wall Lights**, with scroll arms (converted) each approx. 41cms (16") high, ensuite with two larger three branch Wall Lights of same design. (4)

**€300-€400**



**662. An attractive ebonised Box**, with floral painted and gilt highlighted porcelain Plaque, inset with an ornate ormolu surround on conforming legs; together with a smaller ditto and an Oriental lacquered Box in the typical taste. (3)

**€150-€180**



**664. A pair of good quality early 19th Century cutglass Decanters**, each with triple neck ring above bands of diamond, hob nail and flute cut bands and mushroom stoppers, 8 1/2" (22cms); together with another Scottish thistle form Decanter and stopper. (3)

**€120-€180**



**661. A pair of large stainless steel four branch - five light Candlesticks**, on circular step bases, approx. 76cms (30") high. (2)

**€100-€150**



**663. A collection of Mineral Samples**, comprising rock crystal, marble, amethyst, rocks and others, as a collection. (as a lot)

**€200-€300**



**665. A late 19th Century French brass five glass Carriage Clock**, with enamel dial, signed Manoah Rhodes & Sons Ltd., Bradford, surmounted with a swing handle, 4 1/2" (12cms), in leather bound case. (1)

**€120-€150**





**666. A pair of Continental claret ground urn shaped gilt highlighted Portrait Panels, a German Meissen floral encrusted and hand painted Model of a flower seller, a Sitzendorf Candelabra modelled as two cherubs and three other similar and a pair of large Italian floral encrusted Candlesticks (converted) as a lot, w.a.f. (9)**  
**€100-€150**



**668. A Georgian mahogany slope front Bureau, with fitted interior, comprising drawers and pigeon holes above one long, two short and two long graduating drawers with brass handles on bracket feet, with associated top, the moulded top above two Gothic design glazed drawers, approx. 213cms high x 99cms wide x 53cms deep (7' x 39" x 21"). (1)**  
**€250-€350**



**670. Fergus O'Ryan, R.H.A., (1910 - 1989)**  
 "Mill Pond," O.O.B., large forest scene with pond in foreground, mill to left, signed lower right, approx. 39" x 54" (99cms x 137cms), painted frame, label on reverse. (1)  
**€800-€1000**



**667. A Doulton blue and floral design Tea Set, with gilt highlights, comprising teapot, sugar bowl and four cups and saucers, a German floral encrusted and decorated Centerpiece and four Belleek Pieces, including a honey pot, two vases and a bowl modelled as a currach (15)**  
**€200-€300**



**669. A Victorian fossilised slate Fire Surround, the oblong top above a plain frieze with corbel supports on stepped pillar supports, approx. 163cms w x 120cms h x 38cms deep (64" x 47" x 11"). (1)**  
**€400-€600**



**671. A 19th Century mahogany cased sarcophagus shaped Cellaret, with lead lining, on plinth base, with hidden castors, approx. 46cms high x 74cms wide (18" x 29"). (1)**  
**€200-€300**



**672. A French gilt metal mounted Vitrine**, with three quarter brass gallery above a bow fronted door with Perspex panel and three selves on four cabriole legs, 143cms x 48cms (56" x 26 1/2"). (1)  
**€150-€250**



**674. A fine quality Victorian rosewood fold-over Card Table**, the serpentine front above a frieze with central carving on cabriole legs, approx. 89cms (35") wide. (1)  
**€250-€320**



**676. Champagnes: A collection of varied bottles**, to include:  
\* Pierre Darcys;  
\* Laurent Devillard;  
\* Pol Roger;  
\* J.M. Rivot and Charles Heidrick, as a lot. (5)  
**€180-€220**



**673. An early 20th Century suede and pine Gymnasium Vaulting Apparatus**, c. 1930, the double hoop top over shaped body covered in suede, on adjustable outplayed legs, with original maker's name plate, 'Spencer's, Founders' End, Middlesex,' as is. (1)  
**€150-€250**



**675. Wines: A bottle of Chateau Lalande Saint-Julien, 1983**; a bottle of Chateau Lafite Monteil, Bordeaux Superior, 1986; and a bottle of Albert Lucas Gevrey - Chambertin 1993, as a lot, w.a.f. (3)  
**€100-€150**



**677. Wine: Six Bottles**, of Chateau Ducru Beaucaillou Saint Julien, 1993, boxed. (6)  
**€400-€600**



**678. Wine:** A 500cl bottle of **Domaine de Bouteilley**, 1 res Cotes de Bordeaux J. Guillot, 1985, cased (lacks top of box); a bottle of Chateau Rauzan Gassies Margaux, 1967; Chateau Talbot, Medoc 1966, as a lot. (4)

**€200-€300**



**680. Wine:** New Zealand, 2016-2017 Vintage, six varied Bottles, from the Villa Maria Vineyard, including a merlot (C.S.), Pinot Noir, Reserve Sauvignon Blanc, (Chardonnay, Riesling, Sauvignon Blanc) boxed. (6)

**€70-€90**



**682. An attractive Victorian engraved silver Vinaigrette**, of etched design with hinged lid, and filigree clasp and monogrammed 'J.F.'; also an Irish silver Continental design repoussé hinged top Pill Box with cherubs and floral design; an attractive Continental embossed silver circular Pill Box decorated with deer, fruit and flowers; also a Continental chased design circular silver gilt Pill Box. As a lot. (4)

**€200-€300**



**679. Wine:** Four bottles of **Chateau Lynch Bages Grand Cru Classe Pauillac**, 1982; also a Bottle of Chateau Lynch Bayes Pauillac 1997., as a lot. (5)

**€500-€700**



**681. Wine:** Portuguese; a cased set of six bottles, of Barao de Vilar, Deuro Doc red Reserva, 2018, boxed. (6)

**€50-€70**



**683. A Victorian English silver floral embossed urn shaped Peppershaker** (marks worn); a plain silver miniature Tankard, by William Egan, with S shaped floral handle; a modern Irish silver tubular shaped Shot Cup with Celtic motif; and two Victorian English silver shell design Caddy Spoons. (5)

**€150-€200**



**684. A cased set of 6 (three large and three small) etched silver plated Hunting Cups**, each monogrammed in original leather container; together with a silver tubular shaped Hip Flask, with circular hinged lid inscribed 'C.S.S. from R.H.S.,' by Goldsmith Company London, in original leather carrying container, as a lot. (7)

**€150-€200**



**685. Gold Coin:** A Venezuela gold Medal 1967 'Cuatricentenario de Caracas,' 21ct gold, approx. 44gms (overall) with border strip and loop. (1)

**€800-€1000**



**686. An attractive 20th Century Japanese heavy bronze two part Container**, modelled as seated monkey with bowl and bottle in hand. (1)

**€120-€180**



**687. Coins: English and Irish, a large quantity of various late 19th Century and early 20th Century English and Irish Coins**, comprising a number of English Pennies, Half Crowns, Shillings, Queen Elizabeth & Churchill Commemorative Coins, and some Irish Coinage (varied) as a collection, w.a.f. (1)

**€120-€140**



**688. A pair of George III style Gainsborough Armchairs**, with shaped backs, open arms, covered in leather on front square legs. (2)

**€180-€220**



**689. William Knox, British (1862-1925)**

"Perranporth, Cornwall," O.O.C., extensive Coastal Scene, signed lower left, approx. 61cms x 91cms (24" x 36"), in painted moulded frame. (1)

**€250-€320**



**690. A modern Middle Eastern rust ground woolen Carpet**, with central cruciform and geometric design inside conforming border, as a fabric, approx. 244cm long x 170cms wide (8' x 6'7"). (1)

**€120-€140**



**692. An Irish woolen Dun Emer guild type Rug**, the mustard ground with central Celtic motif, as a fabric, approx. 138cms long x 72cms wide (54" x 28"). (1)

**€200-€300**



**694. An Oriental style machine made Carpet**, with large centre medallion crimson ground and stylized flowers and spandrels, inside a floral ivory border, approx. 12'3" x 11'2" (370cms x 340cms), as a fabric, w.a.f. (1)

**€100-€200**



**691. A good Persian Carpet**, with small centre medallion and all over stylised floral pattern in iron red, inside a multi border, 10' x 7' (323cms x 220cms). (1)

**€500-€700**



**693. A Chinese woolen Carpet**, the overall cream ground with plain center and blind decorative floral border, as a fabric, approx. 249cms long x 172cms wide (98" x 68"). (1)

**€100-€150**



**695. An attractive Oriental silk Carpet**, the salmon and navy ground center with multiple floral diamonds inside a multiple geometric border, as a fabric, approx. 252cms long x 160cms wide (99" x 63"). (1)

**€150-€200**



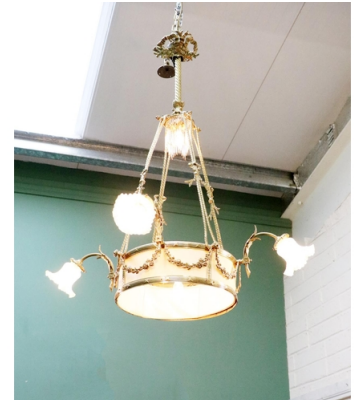
**696. An antique Middle Eastern red ground woolen Carpet**, the center with three large and three small rectangular panels, inside a wide conforming border, as a fabric, approx. 226cms long x 147cms wide (89 x 58"). (1)

**€150-€200**



**698. An attractive 19th Century Aubusson type French Tapestry**, green ground floral decoration in the classical taste, as a fabric, approx. 262cms long x 178cms wide (103" x 70"). (1)

**€400-€500**



**700. An attractive 19th Century ormolu Adams design Ceiling Light**, with ornate rose with tubular turned pole rope suspensions, embellished with Adams love knot holding a cylindrical shade, issuing four lights with shaped glass shade. (1)

**€400-€600**



**697. An attractive Oriental Rug**, the claret center with attractive floral bouquets inside a narrow navy ground, with conforming border, as a fabric, approx. 165cms long x 102cms wide (65" x 40"). (1)

**€80-€100**



**699. An attractive 20th Century Chinese embroidered royal yellow ground dragon Robe**, with typical motifs, together with a monumental embroidered gold and red peacock design and floral design Chinese Robe. (2)

**€400-€600**



**701. A pair of fine quality late Victorian ornate brass and pierced decorated Ceiling Lights**, the shaped stem with scroll design issuing five lights with etched glass shades. (2)

**€1000-€1500**



**702. A Waterford 6 branch cutglass Ceiling Light**, with tubular stem and shaped cups and drops. (1)

**€300-€400**



**704. A late 19th Century English mahogany Bench**, in the manner of Jas. Shoolbred, the moulded latted top issuing padded arms above a seat on front turned legs, approx. 122cms wide (48"). (1)

**€200-€300**



**706. A fine quality Edwardian carved mahogany Monks Bench**, of small proportions, by Edwards and Roberts (stamped and with applied label) decorated in the Cromwellian style, with carved panel back and arms, above lift top on a box base with front carved hairy paw feet, approx. 96cms (38") wide. (1)

**€400-€600**



**703. A six branch figural Ceiling Light**, with cherub supports; together with an 8 branch Ceiling Light, as a lot, w.a.f. (2)

**€200-€300**



**705. Two late 18th Century creamware transfer Jugs**, "The Soldiers Return - Love and Hope," with opposing medallion with figures; together with "Black-Eyed Sue and Sweet Poll of Plymouth - Taking leave of their Lovers who are Going to Botany Bay," each with shaped handle, (repaired), as is, each approx. 23cms (9") high. (2)

**€350-€450**



**707. Fergus Shannon, Irish (b. 1965)**

"Italian Villa," O.O.B., signed lower right and dated, approx. 48cms x 75cms (19" x 29 1/2"), gilt tipped painted frame. (1)

**€200-€300**



**708. Fergus Shannon, Irish (b. 1965)**

"The Rescue at Kabul Airport," O.O.B., signed lower right, inscribed on reverse, approx. 74cms x 48cms (29" x 19") tipped painted frame. (1)  
**€200-€300**



**710. Fergus Shannon, Irish (B. 1965)**

"Hazel Hatch Bridge, Celbridge, Co. Kildare," O.O.B., approx. 71cms x 41cms (28" x 16"), signed lower right, gilt tipped, painted frame, inscribed on reverse. (1)  
**€250-€350**



**712. A German porcelain Doll**, (stamped on back of head) with moving eyes, blonde hair, red dress with purple and lace overcoat, and original leather shoes. (1)  
**€80-€100**



**709. Fergus Shannon, Irish (b. 1965)**

"Malahide Castle," O.O.B., signed lower right, long inscription on reverse, approx. 50cms x 60cms (19 1/2" x 23 1/2") gilt tipping, painted frame. (1)  
**€250-€320**



**711. A 19th Century attractive tubular shaped Chinese cloisonné Vase**, of typical colourful floral design, approx. 22cms (9") high. (1)  
**€120-€180**



# CONDITIONS OF SALE

## BIDDING

If the purchaser is attending the auction in person they must register for a paddle prior to the auction. Please allow sufficient time for the registration process. We request that all Bidders make available Photographic ID and Proof of Address on Registration.

\*The Auctioneer reserves the right to decline bidding from any prospective bidder.

## LIVE BIDDING

Please note that live bidding is available via [easyliveauction.com](http://easyliveauction.com) and [the-saleroom.com](http://the-saleroom.com). **This service incurs a surcharge of up to 5% levied by the live auction host and chargeable on the hammer price in addition to the buyer's premium.** The auctioneer advises all prospective buyers that live auctions are subject to technical issues that are beyond the control of the auctioneers and as such the auctioneer cannot guarantee the accuracy of bids placed online. Absentee bidding and telephone bidding is available as an alternative to live bidding and does not incur any additional surcharge to the buyer. Issues relating to live bidding including initial registration should be addressed directly with the live auction host.

## ABSENTEE BIDDING

Absentee bids must be received no later than 5pm on Tuesday, March 4th, 2025. Any bids received after this deadline cannot be guaranteed. If you are bidding with us for the first time then please contact our office for guidelines on registration.

## TELEPHONE BIDDING

Telephone bidding is available on lots with a pre-sale estimate of €500 or more. Registration for telephone bidding ends at 5pm on Tuesday, March 4th, 2025. Any requests for telephone bidding received after this deadline may not be processed. It would be advisable to leave a maximum covering bid in case we are not able to contact you by telephone. **All prospective Buyers are advised that Telephone Bidding may be recorded.**

## CONDITION REPORTS AND IMAGE REQUESTS

We recommend that the buyer views the item(s) in person prior to the auction, or have a representative view the item(s) on their behalf. The Auctioneer will endeavour to make certain observations on the condition of items but the buyer is reminded that the condition report is based on an opinion and should not be taken as a statement of fact. Any subsequent issues arising based on condition reports given prior to auction will not be entertained. All requests for condition reports and/or additional images of lots in this sale must be received no later than 12pm Friday, February 28th 2025. Any requests received after this deadline will not be entertained. We cannot guarantee that all such requests received will be answered by the sale day. **All measurements are given height before width and are approximate.**

Fonsie Mealy Auctioneers reserve the right to withdraw or adjust any lot prior to the auction without notice. Any such lots so affected will be announced on the auction day.

## CONTACT DETAILS FOR VIEWING AND SALE DAYS

Office: +353 56 44 41229  
+353 56 44 46200

Email: [info@fonsiemealy.ie](mailto:info@fonsiemealy.ie)

## COLLECTION AND SHIPMENT ENQUIRIES

Collection from our Auction Rooms at Kilkenny Road, Castlecomer until 6pm on days of sale (Wednesday & Thursday March 5th & 6th, 2025).

Subsequent collections from our Auction Rooms from 10am to 5.30pm on weekdays. No collections available at weekends or bank holidays.

All items must be collected by Friday, March 14th 2025.

Items not collected by that time will be removed to a storage facility at the purchaser's risk and expense..

## SHIPMENT ENQUIRIES

Please contact Belfast East Pack & Send:

00 44 2890219003 / [belfasteast@packandsend.co.uk](mailto:belfasteast@packandsend.co.uk)

Mailboxes etc, Dublin:

01 6710400 / [info@mbedublin2.com](mailto:info@mbedublin2.com)

Carlyle Fine Art Services:

087 2890898 / [david@davidcarlyle.ie](mailto:david@davidcarlyle.ie)

Oldcastle Transport Ltd.

087 7987784 / [reillydistribution@gmail.com](mailto:reillydistribution@gmail.com)

McCanns Removals

057 8736596 / [info@movinghome.ie](mailto:info@movinghome.ie)

## ARTIST'S RESALE RIGHTS (DROIT DE SUITE)

Under legislation, a royalty (droit de suite) is payable to living or deceased (up to 70 years from date of death) artists of E.U. Nationality on all works resold for €3,000 or more, other than those sold by the artist or the artist's agent.

The resale royalty payable is calculated as follows:

From €3,000 to €50,000	4%
From €50,000.01 to €200,000	3%
From €200,000.01 to €350,000	1%
From €350,000.01 to €500,000	0.5%
Exceeding €500,000	0.25%

The total amount of royalty payable on any individual sale shall not exceed €12,500.

**The seller is liable for payment of this royalty on completion of the sale. The artist may request from the Auctioneer any information necessary to secure payment.**

Unless otherwise directed by the vendor, the Auctioneer will automatically deduct the amount due from the proceeds of sale and will hold in trust for the artist or their representative the said sum.

**Fonsie Mealy's** Est. 1934

PSRA Registration No: 001687

Chatsworth Auction Rooms,  
Chatsworth St., Castlecomer,  
Co. Kilkenny, Ireland

T: +353 56 4441229  
E: [info@fonsiemealy.ie](mailto:info@fonsiemealy.ie)  
W: [www.fonsiemealy.ie](http://www.fonsiemealy.ie)

# TERMS AND CONDITIONS

Fonsie Mealys, hereinafter called "the auctioneer" exercises all reasonable care to ensure that all descriptions are reliable and accurate, and that each item is genuine unless the contrary is indicated. However, the descriptions are not intended to be, are not and are not to be taken to be, statements of fact or representations of fact in relation to the lot. They are statements of the opinion of the auctioneers, and attention is particularly drawn to clause 5 set out below. Comments and opinions, which may be found in or on lots as labels, notes, lists, catalogue prices, or any other means of expression, do not constitute part of lot descriptions and are not to be taken as such unless they are made or specifically verified by the auctioneers.

## Clause 1

(a) Each lot is put up subject to any reserve price imposed by the vendor

(b) Subject to sub-clause (a) of this clause, the highest bidder for each lot shall be the purchaser thereof

(c) If any dispute arises as to the highest bidder the auctioneer shall have absolute discretion to determine the dispute and may put up again and resell the lot in respect of which the dispute arises.

## Clause 2

(a) The bidding and advances shall be regulated by and at the absolute discretion of the auctioneer and he shall have the right to refuse any bid or bids. NOTE: Where an agent bids, even on behalf of a disclosed client, the auctioneer nevertheless has the right at his discretion to refuse any such bid.

(b) The purchaser of each lot shall immediately on its sale, if required by the auctioneer, give him the name and address of the purchaser and pay to the auctioneer at his discretion the whole or part of the purchase money. If the purchaser of any lot fails to comply with any such requirement the auctioneer may put up again and re-sell the lot; if upon such re-sale a lower price is obtained than was obtained on the first sale the purchaser in default on the first sale shall make good the difference in price and expenses of re-sale which shall become a debt due from him.

(c) Where an agent purchases on behalf of an undisclosed client such agent shall be personally liable for payment of the purchase money to the auctioneer and for safe delivery of the lot to the said client.

## Clause 3

(a) The auctioneer reserves the rights to bid on behalf of clients including vendors, but shall not be liable for errors or omissions in executing instructions to bid.

(b) The auctioneer reserves the rights, before or during a sale, to group together lots belonging to the same vendor, to split up and to withdraw any lot or lots at the auctioneer's absolute discretion and without giving any reason in any case.

(c) The auctioneer acts as agent only, and therefore shall not be liable for any default of the purchaser or vendor.

## Clause 4

(a) Each lot shall be at the purchaser's risk from the fall of the hammer and shall be paid for in full before delivery and taken away at his expense within one day of the sale. The buyer will be responsible for all removal, storage and insurance charges in respect of any lot which has not been collected within one day of the date of sale.

(b) If any purchaser fails to pay in full for any lot within 21 days of the date of sale such lot may at any time thereafter at the auctioneer's discretion be put up for sale by auction again or sold privately; if upon such re-sale a lower price is obtained than was obtained on the first sale the purchaser in default on the first sale shall make good the difference in price and the expenses of re-sale which shall become debt due from him.

(c) Interest at 2 per cent per month and legal costs (if any) for recovery of monies due shall be payable by the purchaser on any overdue account.

## Clause 5

(a) All lots are made available for inspection before each sale and each buyer, by making a bid, acknowledges that he has satisfied himself as to the physical condition, age and catalogue

description of each lot (including but not restricted to whether the lot is damaged or has been repaired or restored).

(b) All lots are sold with all faults and imperfections and errors of description and the Auctioneer and its employees, servants or agents shall not be responsible for any error of description or for the condition or authenticity of any lot, save for Clause 5 (c) below. Written or verbal condition reports may be supplied by the Auctioneer on request but these are merely statements of opinion, and any error or omission in these reports may not be taken as grounds for a cancellation of sale or refund of any part of the purchase price or the cost of any repairs to the lot or lots reported on

(c) A purchaser shall be at liberty to reject any lot if he - (i) gives the auctioneer written notice of intention to question the genuineness of the lot within seven days from the date of sale; AND (ii) proves that the lot is a deliberate forgery and (iii) returns to the auctioneer within 20 days from the date of sale the lot in the same condition as it was at the time of sale; provided that the auctioneer may, at his discretion, on receiving a request in writing from the purchaser, extend for a reasonable period the time for return of the lot to enable it to be submitted to expertisation. NOTE: The onus of proving a lot to be a deliberate forgery is on the purchaser.

(d) Where a lot has been submitted to expertisation, all costs of such expertisation shall be paid by the person who retains the certificate of expertisation and item or items to which the certificate relates.

(e) Where the purchaser of a lot discharges the onus and acts in accordance with sub-clause (b) of this clause, the auctioneer shall rescind the sale and repay to the purchaser the purchase money paid by him in respect of the lot.

(f) No lot shall be rejected if, subsequent to the sale, it has been marked by an expert committee or treated by any other process unless the auctioneer's permission to subject the lot to such treatment has first been obtained in writing.

(g) Any lot listed as a "collection, range, portfolio etc." or stated to comprise or contain a collection or range of items which are not described shall be put up for sale not subject to rejection and shall be taken by the purchaser with all (if

any) faults, lack of genuineness and errors of description and numbers of items in the lot, and the purchaser shall have no right to reject the lot; except that, notwithstanding the foregoing provisions of this sub-clause, where before a sale a person intending to bid at the sale gives notice in writing to, and satisfies the auctioneer that any such lot contains any item or items undescribed in the sale catalogue and that person specifically describes that item or those items in that notice, then that item or those items shall, as between the auctioneer and that person, be taken to form part of the

description of the lot. Clause 6 The respective rights and obligations of the parties shall be governed and interpreted by Irish law, and the buyer hereby submits to the exclusive jurisdiction of the Irish Courts.

## Clause 6

The respective rights and obligations of the parties shall be governed and interpreted by Irish law and the buyer hereby submits to the exclusive jurisdiction of the Courts of the Republic of Ireland.

## SPECIAL CONDITIONS

a) The buyer shall pay the Auctioneer a commission at the rate of 25% of the purchase price (which includes VAT at the prevailing rate under The Margin Scheme and which is not reclaimable).

(b) The Auctioneer or its employees, servants or agents may, on request organise packing and shipping of lots purchased or may order on the buyer's behalf third parties to pack or ship purchases. Under no circumstances does the Auctioneer accept any liability whatsoever for any loss or damage howsoever occasioned in the course of such service.

(c) The buyer authorises the Auctioneer to use any photographs or illustrations of any lot purchased for any or all purposes as the Auctioneer may require. The placing of a bid will be taken as full agreement to all the above conditions.





Fonsie Mealy's Est 1934